



WATTEN HOUSE

Site Plan

CURATED FACILITIES

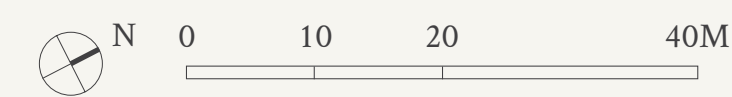
Watten House's unique landscaping takes advantage of the elevated and undulating site to create painterly gardens and cascading ponds for residents to enjoy. Nestled amidst lush nature, a thoughtfully curated suite of facilities invites residents to unwind and recharge.

- | | |
|--------------------------|-------------------------|
| 1 Arrival Lounge | 14 Breeze Walk |
| 2 Arrival Terrace | 15 Garden Courtyard |
| 3 Arrival Water Cascades | 16 Rain Dance |
| 4 Concierge* | 17 Garden of Dimensions |
| 5 Sun Deck | 18 The Gym* |
| 6 Sakura Pool Foyer | 19 Reading Pavillion |
| 7 Jacuzzi Pool | 20 Function Room* |
| 8 50m Lap Pool | 21 Terrace Falls |
| 9 Poolside Lounge | 22 Aqua Gym |
| 10 Spa Pool | 23 Reflective Pond |
| 11 Tsubaki Pool Foyer | 24 Sunshine Play |
| 12 Aqua Lounge | 25 Wellness Pool |
| 13 Cascading Pond | |

OTHER FACILITIES

- | | |
|---------------------------|----------------------|
| 26 Guard House | 31 Bicycle Bay* |
| 27 Pedestrian Gate | 32 Bin Centre* |
| 28 Electrical Substation* | VS Ventilation Shaft |
| 29 Management Office* | □ Water Tank at Roof |
| 30 Genset* | |

*Located at Basement



BP NO.: A2091-00567-2022-BP01 DATED 09/10/2023



Artist's Impression

Choice Units

36 SHELFORD ROAD, SINGAPORE 288429

Floor \ Unit	01	02	03	04	05
Attic	PH1	Communal Landscape			
05		D1	CS6	C1	C2
04	D1	D1	CS6	C1	C2
03	D1	D1	CS6	C1	C2
02	D1	D1	CS6	C1	C2
01	D1(p2)	D1(p2)	CS6(p1)	C1(p1)	C2(p1)
B1	Carpark				

38 SHELFORD ROAD, SINGAPORE 288431

Floor \ Unit	06	07	08	09
Attic	Communal Landscape			PH2
05	CS2	CS1	D2	
04	CS2	CS1	D2	D2
03	CS2	CS1	D2	D2
02	CS2	CS1	D2	D2
01	CS2(p1)	CS1(p1)	D2(p1)	D2(p1)
B1	Carpark			

44 SHELFORD ROAD, SINGAPORE 288437

Floor \ Unit	19	20	21	22
Attic	Communal Landscape		PH2	
05	CS2	CS1		D2
04	CS2	CS1	D2	D2
03	CS2	CS1	D2	D2
02	CS2	CS1	D2	D2
01	CS2(p2)	CS1(p2)	D2(p1)	D2(p1)
B1	Carpark			

46 SHELFORD ROAD, SINGAPORE 289694

Floor \ Unit	23	24	25	26	27
Attic	Communal Landscape				PH3
05	C2	C1	CS5	E1	
04	C2	C1	CS5	E1	E1
03	C2	C1	CS5	E1	E1
02	C2	C1	CS5	E1	E1
01	C2(p1)	C1(p1)	CS5(p1)	E1(p1)	E1(p1)
B1	Carpark				

40 SHELFORD ROAD, SINGAPORE 288433

Floor \ Unit	10	11	12	13	14
Attic	Communal Landscape			PH3	
05	CS5	C1	C2		E1
04	CS5	C1	C2	E1	E1
03	CS5	C1	C2	E1	E1
02	CS5	C1	C2	E1	E1
01	CS5(p2)	C1(p2)	C2(p2)	E1(p1)	E1(p1)
B1	Carpark				

42 SHELFORD ROAD, SINGAPORE 288435

Floor \ Unit	15	16	17	18
Attic		PH3	Communal Landscape	
05	E1		CS2	CS1
04	E1	E1	CS2	CS1
03	E1	E1	CS2	CS1
02	E1	E1	CS2	CS1
01	E1(p2)	E1(p2)	CS2(p1)	CS1(p1)
B1	Carpark			

48 SHELFORD ROAD, SINGAPORE 289731

Floor \ Unit	28	29	30	31
Attic	PH3	Communal Landscape		
05		E1	CS4	CS3
04	E1	E1	CS4	CS3
03	E1	E1	CS4	CS3
02	E1	E1	CS4	CS3
01	E1(p1)	E1(p1)	CS4(p1)	CS3(p1)
B1	Carpark			

50 SHELFORD ROAD, SINGAPORE 289732

Floor \ Unit	32	33	34	35	36
Attic	Communal Landscape				PH1
05	CS6	C1	C2	D1	
04	CS6	C1	C2	D1	D1
03	CS6	C1	C2	D1	D1
02	CS6	C1	C2	D1	D1
01	CS6(p1)	C1(p1)	C2(p1)	D1(p2)	D1(p2)
B1	Carpark				

3-BEDROOM

TYPE C1, C1(p1), C1(p2)

92 sqm | 990 sqft

TYPE C2, C2(p1), C2(p2)

108 sqm | 1163 sqft

3-BEDROOM + STUDY

TYPE CS1, CS1(p1), CS1(p2),
CS2, CS2(p1), CS2(p2), CS3, CS3(p1),
CS4, CS4(p1), CS5, CS5(p1), CS5(p2),
CS6, CS6(p1)

143 sqm | 1539 sqft

4-BEDROOM

TYPE D1, D1(p2), D2, D2(p1)

172 sqm | 1851 sqft

5-BEDROOM

TYPE E1, E1(p1), E1(p2)

220 sqm | 2368 sqft

PENTHOUSE

Sky Villa Luxury Collection

TYPE PH1, PH2

317 sqm | 3412 sqft

Sky Villa Prestige Collection

TYPE PH3

379 sqm | 4080 sqft



A Home Beyond Time

The private lift* opens up to an elegantly proportioned living room designed to provide maximum space for timeless memories to unfold. From simple everyday rituals to celebratory milestones, this is where family stories and legacies are woven. Where a house becomes a home.

*More than three-quarters of the residences come with a private lift

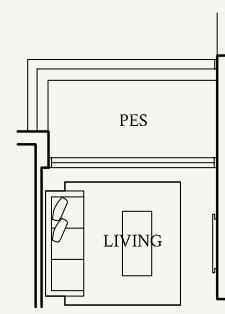
3-Bedroom

TYPE C1
92 sqm | 990 sqft

#02-04 to #05-04
#02-11 to #05-11
#02-33 to #05-33
#02-24* to #05-24*

TYPE C1(p1)
92 sqm | 990 sqft

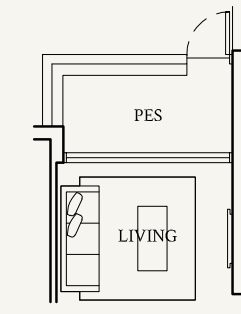
#01-04, #01-33
#01-24*



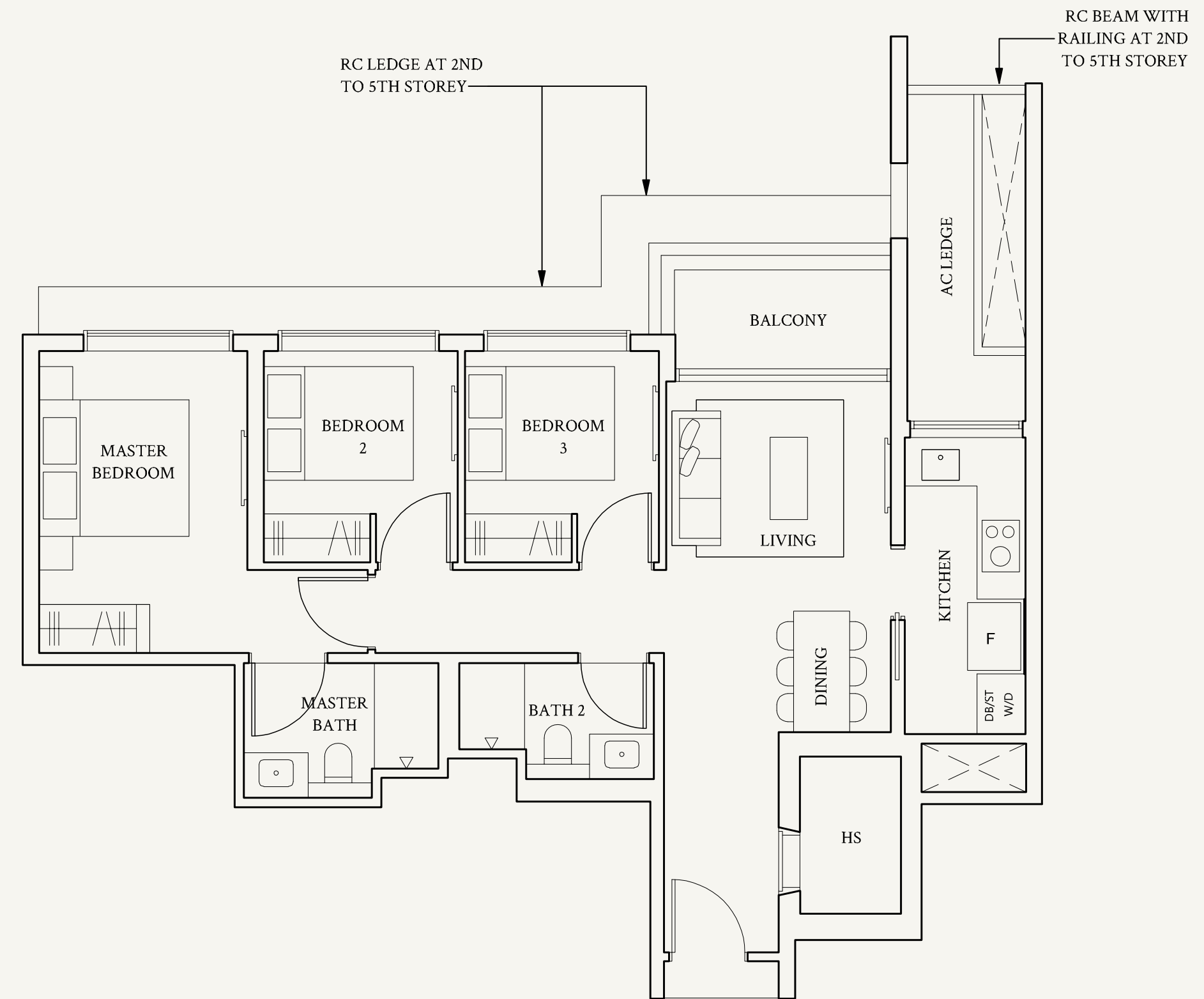
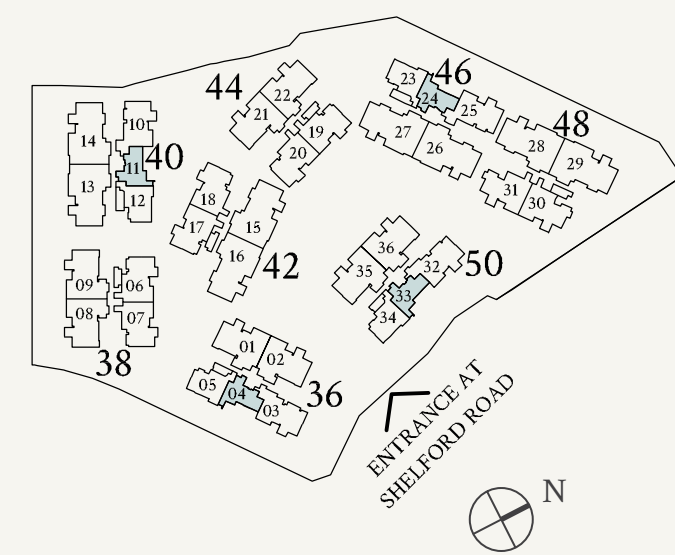
Not to scale

TYPE C1(p2)
92 sqm | 990 sqft

#01-11



Not to scale



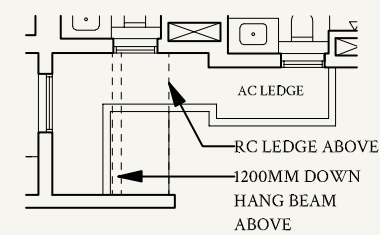
Areas include AC ledge, balcony, private enclosed space (PES) or private roof terrace (PRT), where applicable. All RC ledges are excluded from strata area and non-load bearing. The plans are subjected to change as may be required by relevant authorities. All areas and measurements stated herein as approximate and subject to final survey.

*Mirrored unit

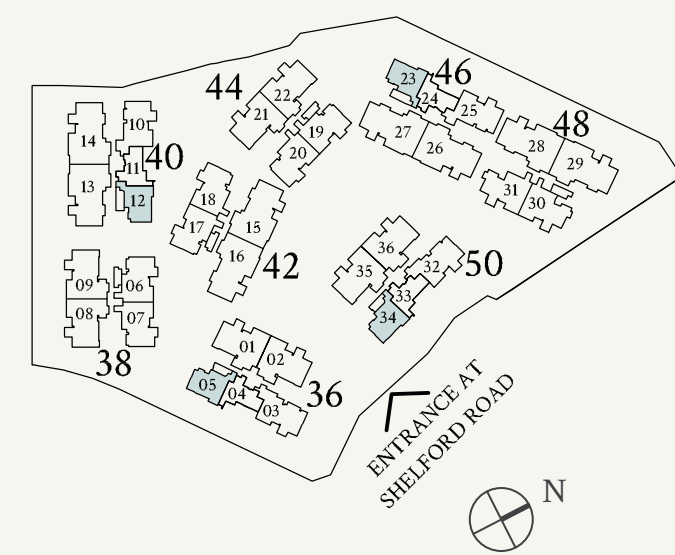
3-Bedroom

TYPE C2
108 sqm | 1163 sqft

- #02-05 to #05-05
- #02-12 to #05-12
- #02-34 to #05-34
- #02-23* to #05-23*
- #05-05, #05-12, #05-34
- #05-23*

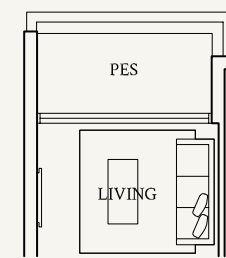


Not to scale



TYPE C2(p1)
108 sqm | 1163 sqft

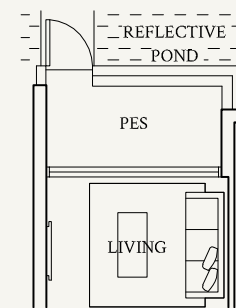
- #01-05, #01-34
- #01-23*



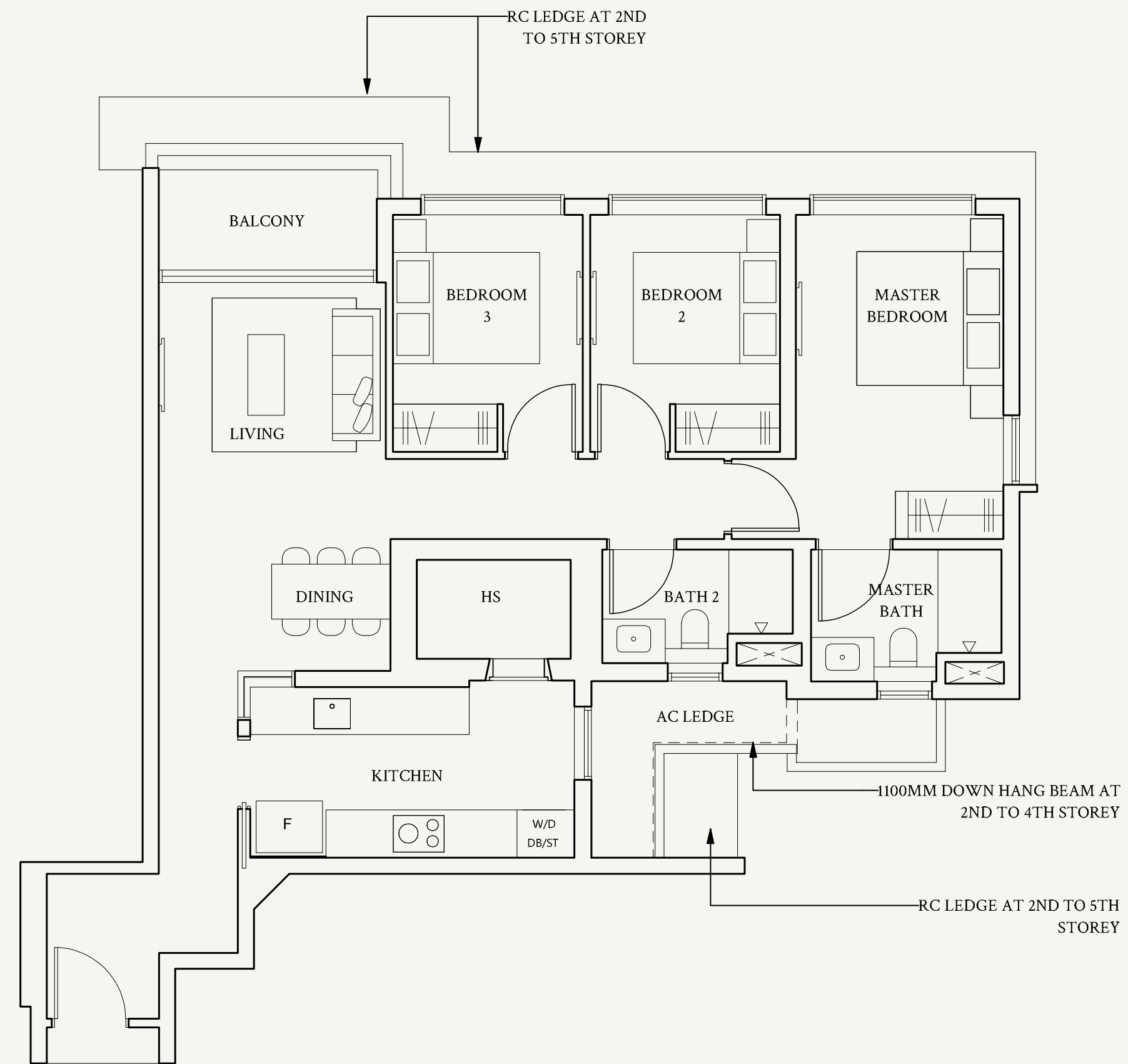
Not to scale

TYPE C2(p2)
108 sqm | 1163 sqft

- #01-12



Not to scale



Areas include AC ledge, balcony, private enclosed space (PES) or private roof terrace (PRT), where applicable. All RC ledges are excluded from strata area and non-load bearing. The plans are subjected to change as may be required by relevant authorities. All areas and measurements stated herein as approximate and subject to final survey.

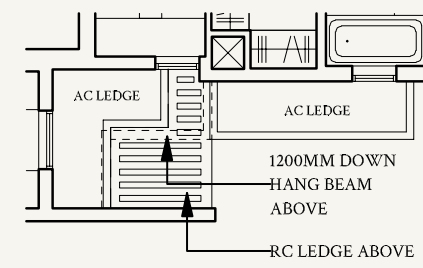
*Mirrored unit

3-Bedroom + Study

TYPE CS1
143 sqm | 1539 sqft

#02-07 to #05-07
#02-18 to #05-18
#02-20 to #05-20

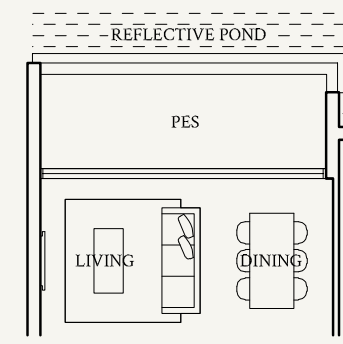
#05-07, #05-18, #05-20



Not to scale

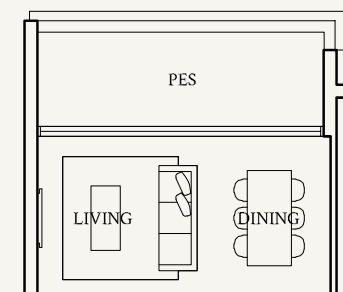
TYPE CS1(p1)
143 sqm | 1539 sqft

#01-07



Not to scale

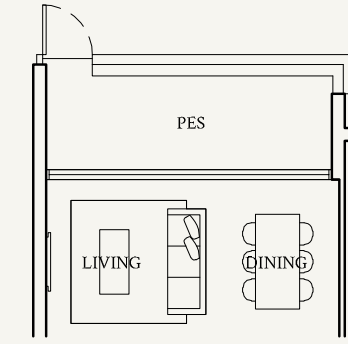
#01-18



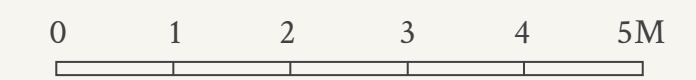
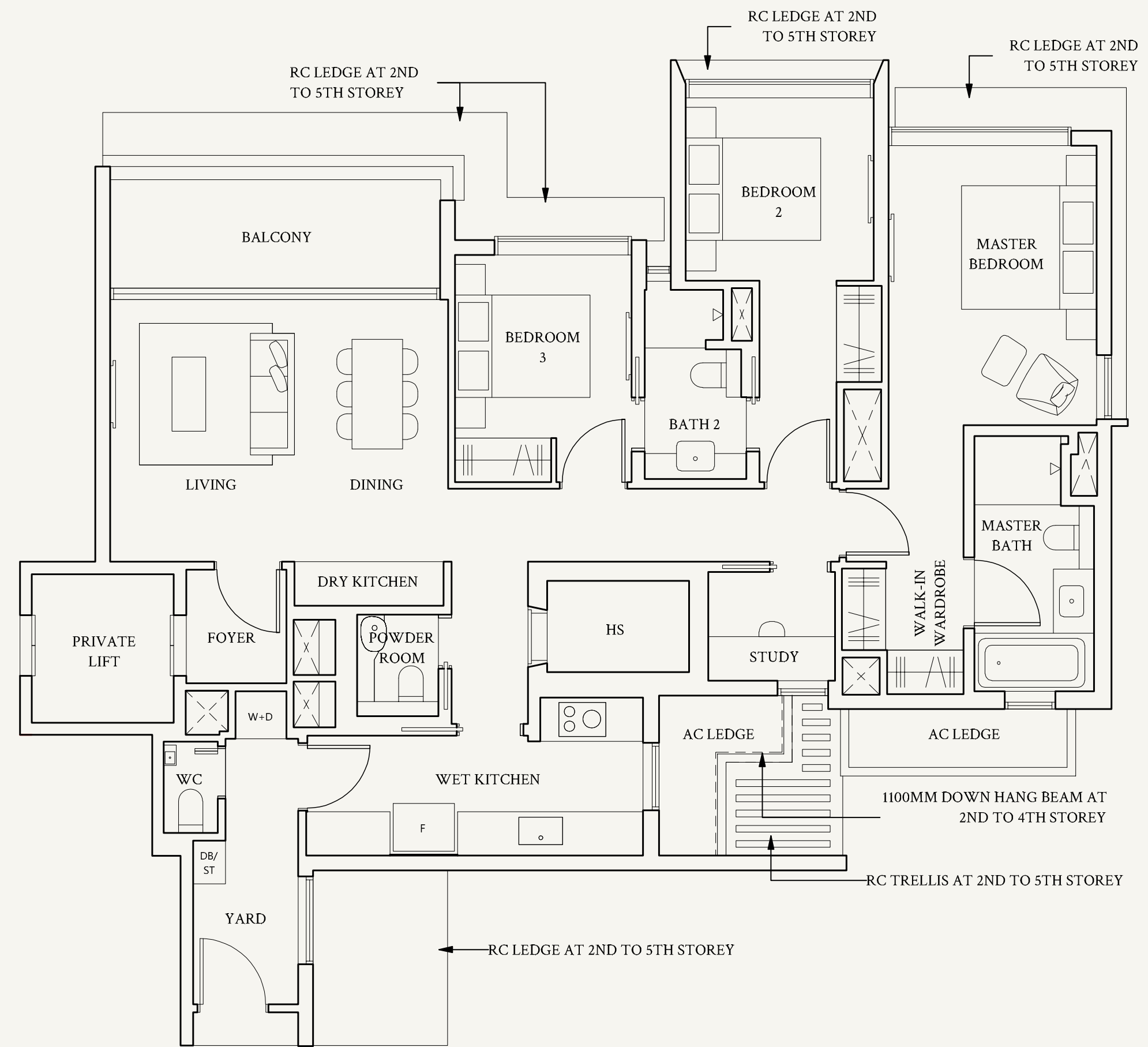
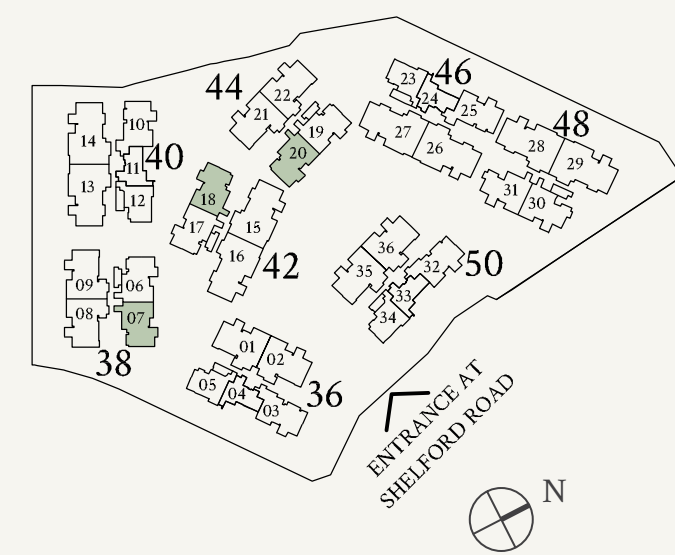
Not to scale

TYPE CS1(p2)
143 sqm | 1539 sqft

#01-20



Not to scale



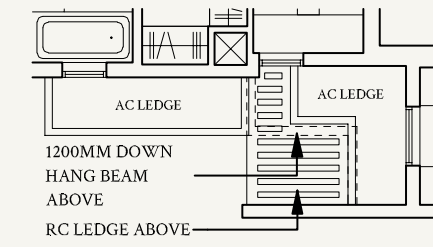
Areas include AC ledge, balcony, private enclosed space (PES) or private roof terrace (PRT), where applicable. All RC ledges are excluded from strata area and non-load bearing. The plans are subjected to change as may be required by relevant authorities. All areas and measurements stated herein as approximate and subject to final survey.

3-Bedroom + Study

TYPE CS2
143 sqm | 1539 sqft

#02-06 to #05-06
#02-17 to #05-17
#02-19 to #05-19

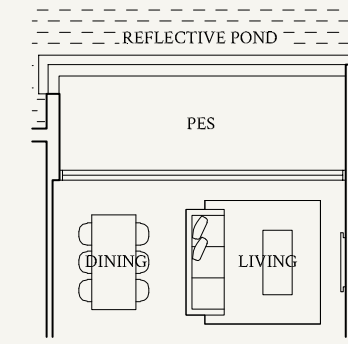
#05-06, #05-17, #05-19



Not to scale

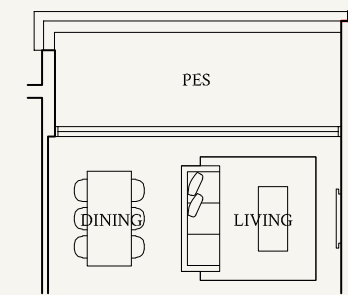
TYPE CS2(p1)
143 sqm | 1539 sqft

#01-06



Not to scale

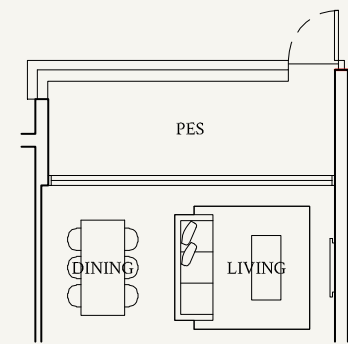
#01-17



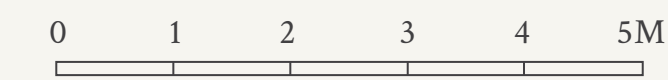
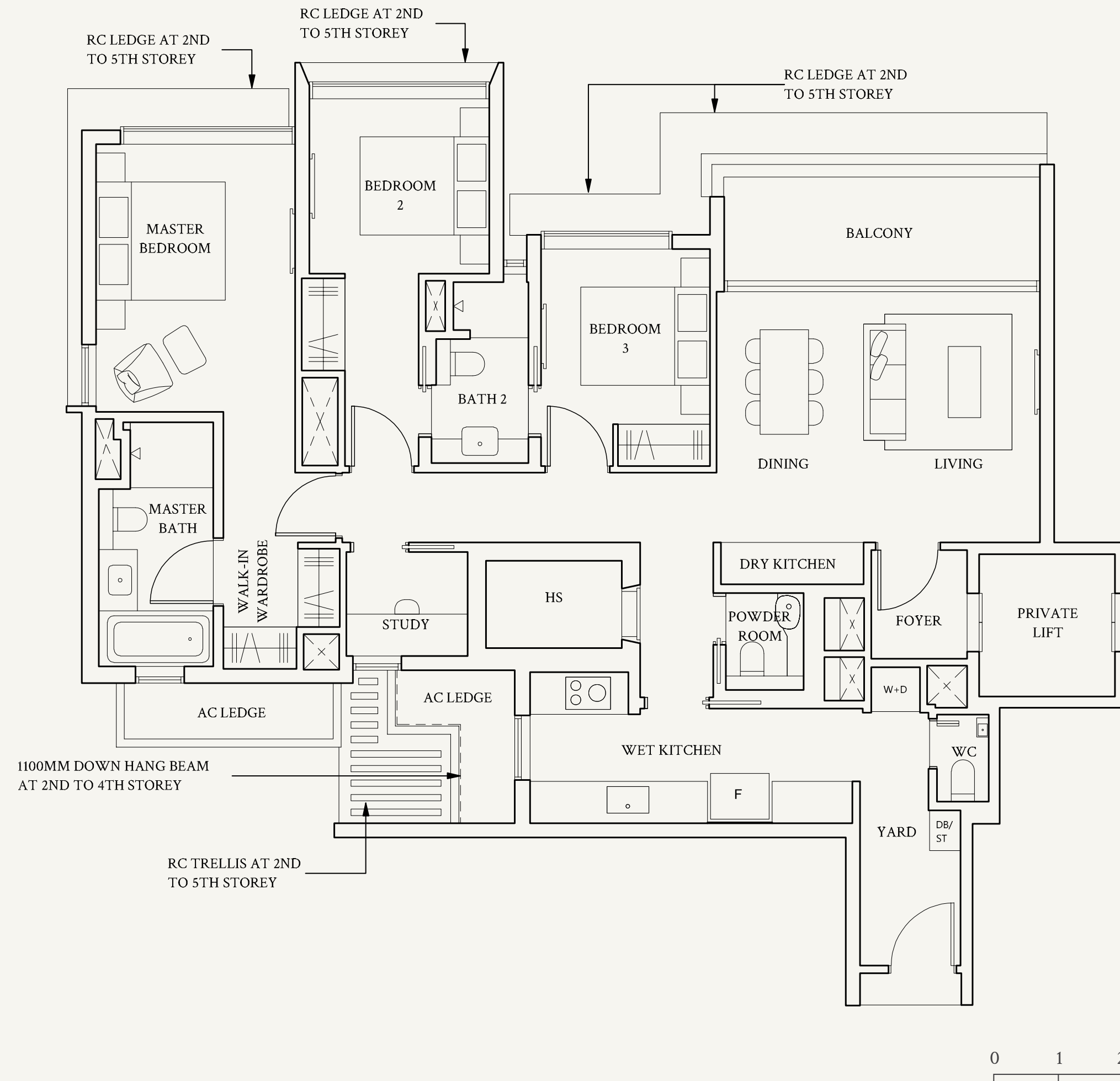
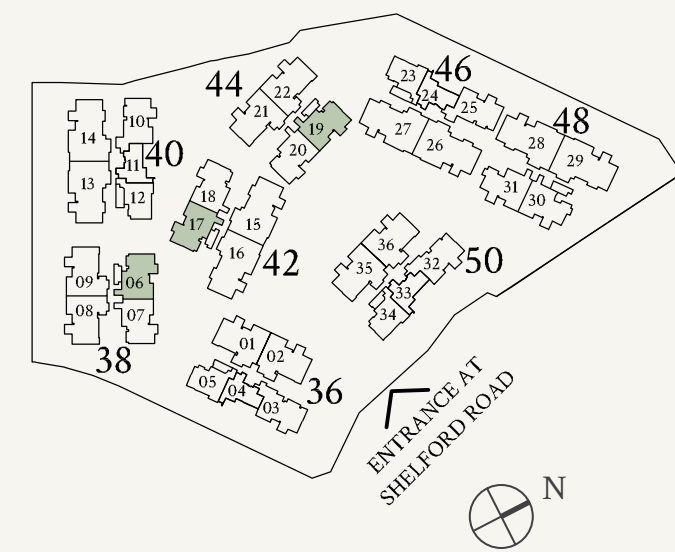
Not to scale

TYPE CS2(p2)
143 sqm | 1539 sqft

#01-19



Not to scale



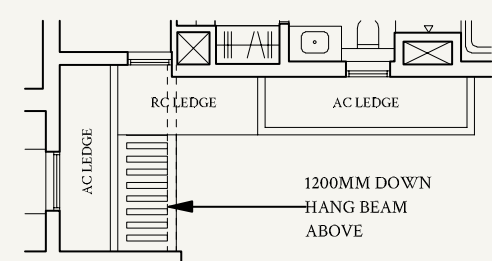
Areas include AC ledge, balcony, private enclosed space (PES) or private roof terrace (PRT), where applicable. All RC ledges are excluded from strata area and non-load bearing. The plans are subjected to change as may be required by relevant authorities. All areas and measurements stated herein as approximate and subject to final survey.

3-Bedroom + Study

TYPE CS3
143 sqm | 1539 sqft

#02-31 to #05-31

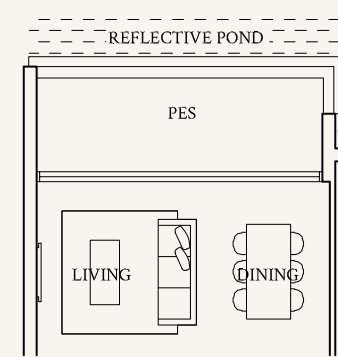
#05-31



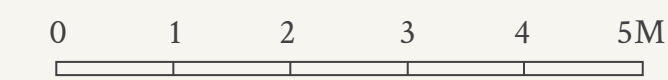
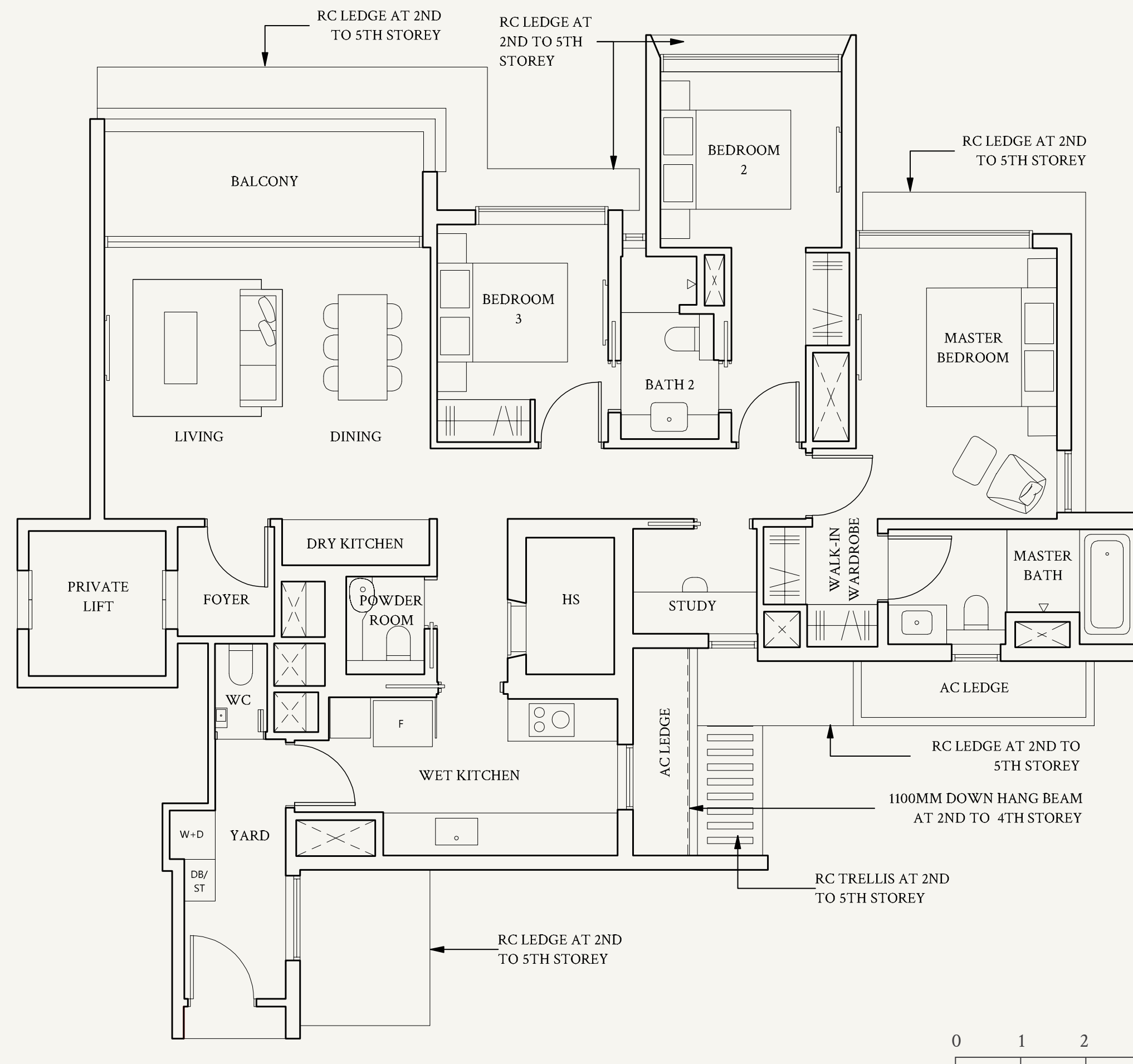
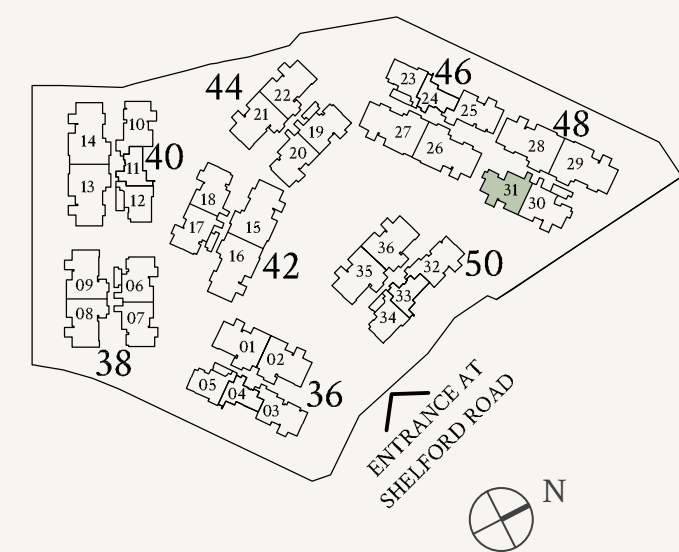
Not to scale

TYPE CS3(p1)
143 sqm | 1539 sqft

#01-31



Not to scale



Areas include AC ledge, balcony, private enclosed space (PES) or private roof terrace (PRT), where applicable. All RC ledges are excluded from strata area and non-load bearing. The plans are subjected to change as may be required by relevant authorities. All areas and measurements stated herein as approximate and subject to final survey.

3-Bedroom + Study

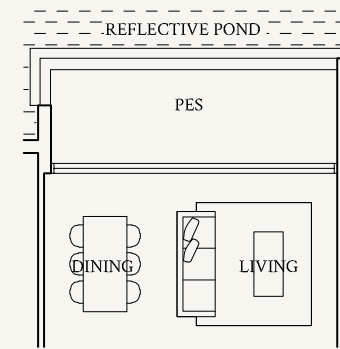
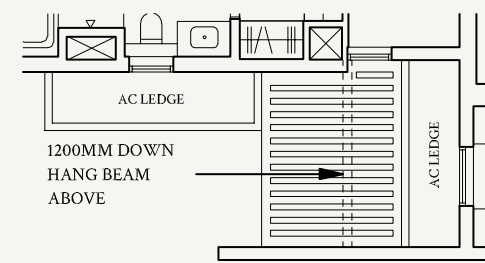
TYPE CS4
143 sqm | 1539 sqft

TYPE CS4(p1)
143 sqm | 1539 sqft

#02-30 to #05-30

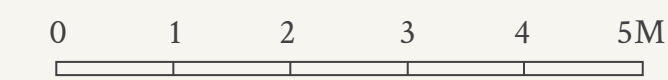
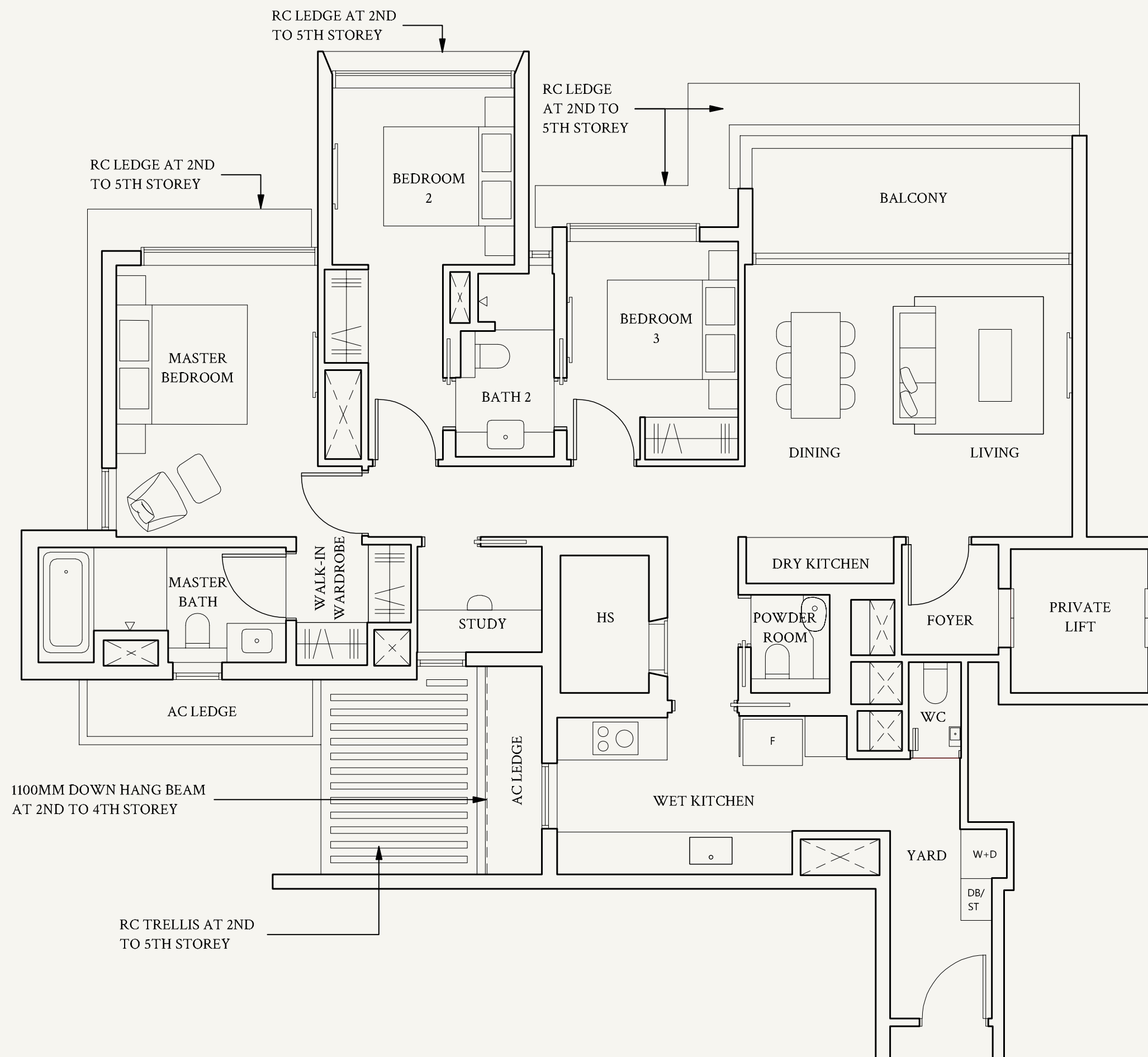
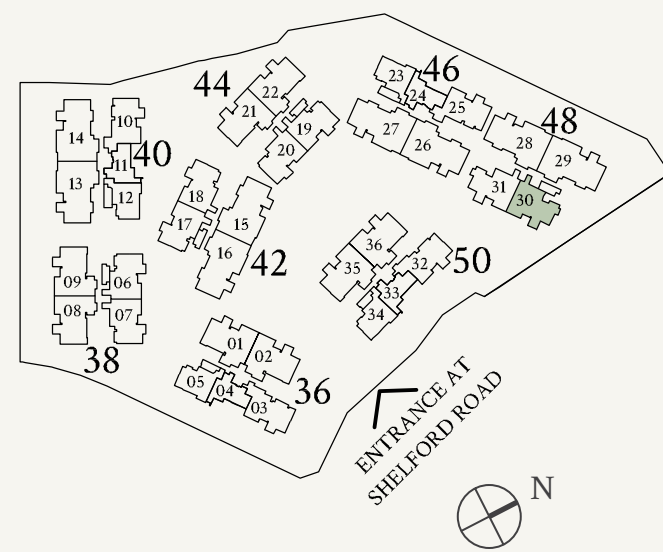
#01-30

#05-30



Not to scale

Not to scale



Areas include AC ledge, balcony, private enclosed space (PES) or private roof terrace (PRT), where applicable. All RC ledges are excluded from strata area and non-load bearing. The plans are subjected to change as may be required by relevant authorities. All areas and measurements stated herein as approximate and subject to final survey.

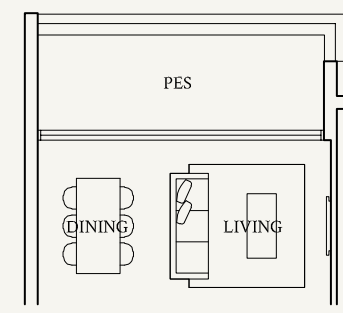
3-Bedroom + Study

TYPE CS5
143 sqm | 1539 sqft

#02-25 to #05-25
#02-10* to #05-10*

TYPE CS5(p1)
143 sqm | 1539 sqft

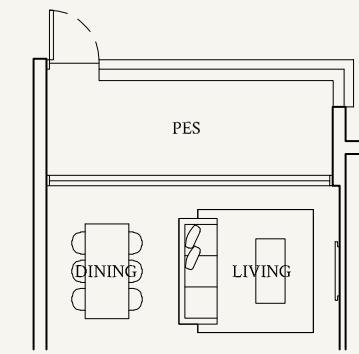
#01-25



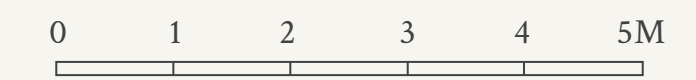
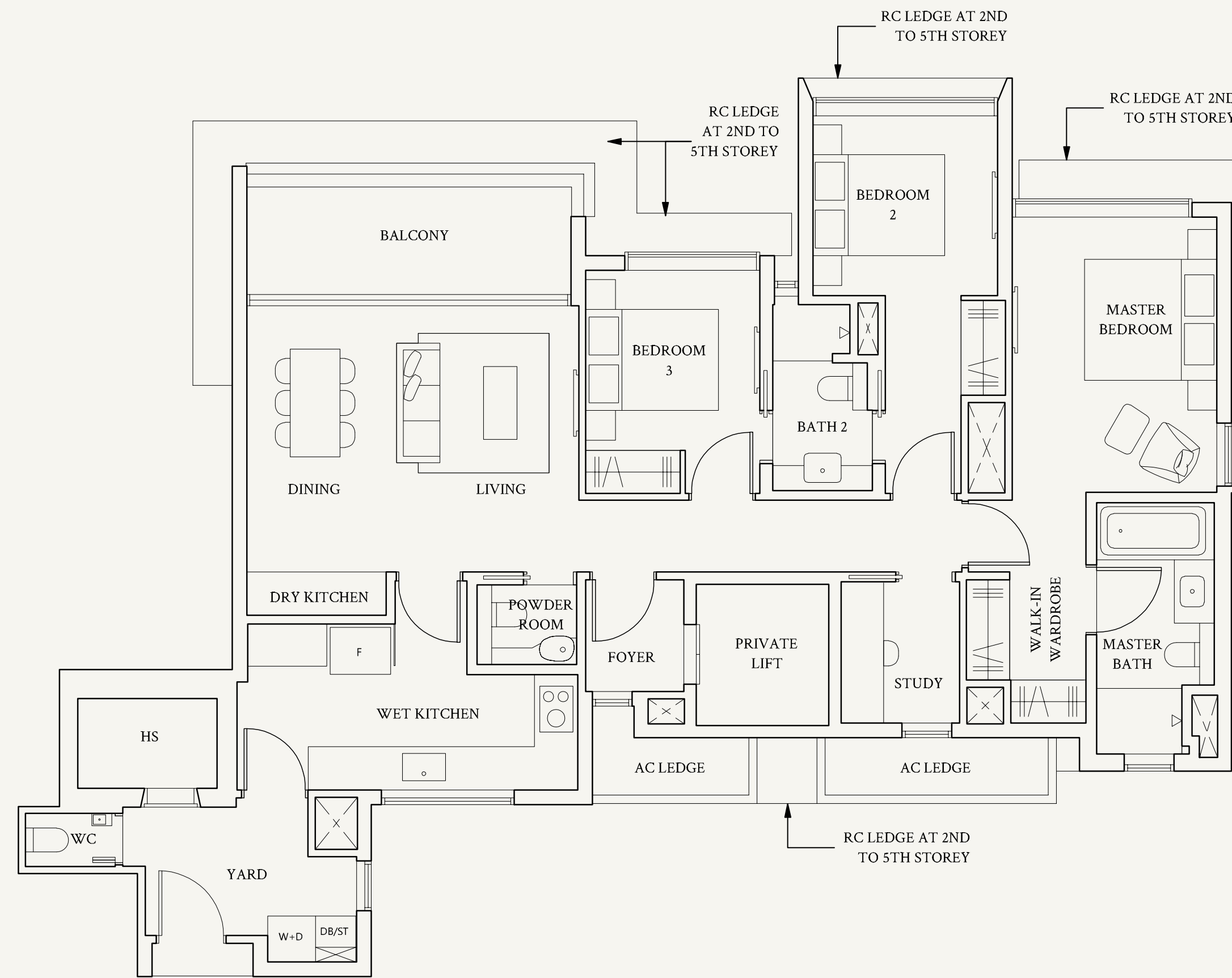
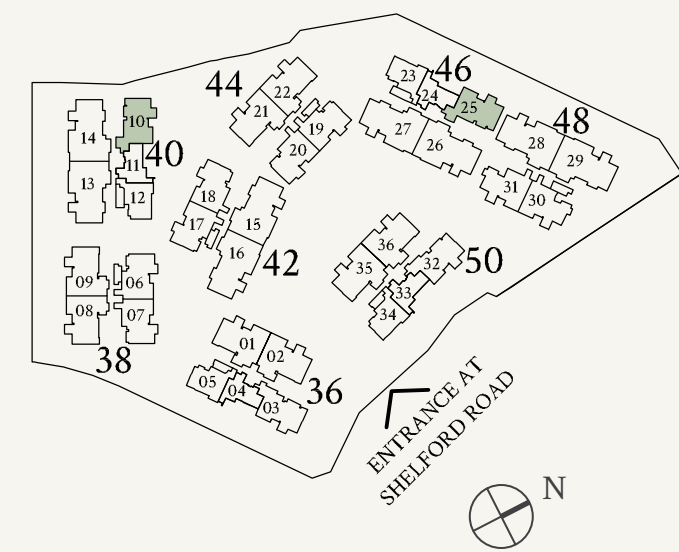
Not to scale

TYPE CS5(p2)
143 sqm | 1539 sqft

#01-10*



Not to scale



Areas include AC ledge, balcony, private enclosed space (PES) or private roof terrace (PRT), where applicable. All RC ledges are excluded from strata area and non-load bearing. The plans are subjected to change as may be required by relevant authorities. All areas and measurements stated herein as approximate and subject to final survey.

*Mirrored unit

3-Bedroom + Study

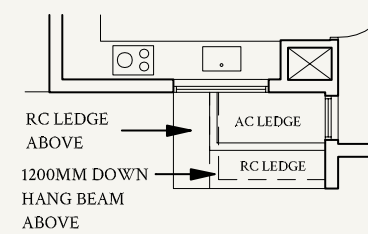
TYPE CS6

143 sqm | 1539 sqft

#02-03 to #05-03

#02-32 to #05-32

#05-03, #05-32

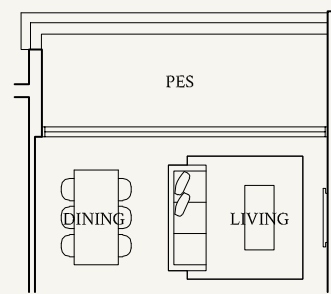


Not to scale

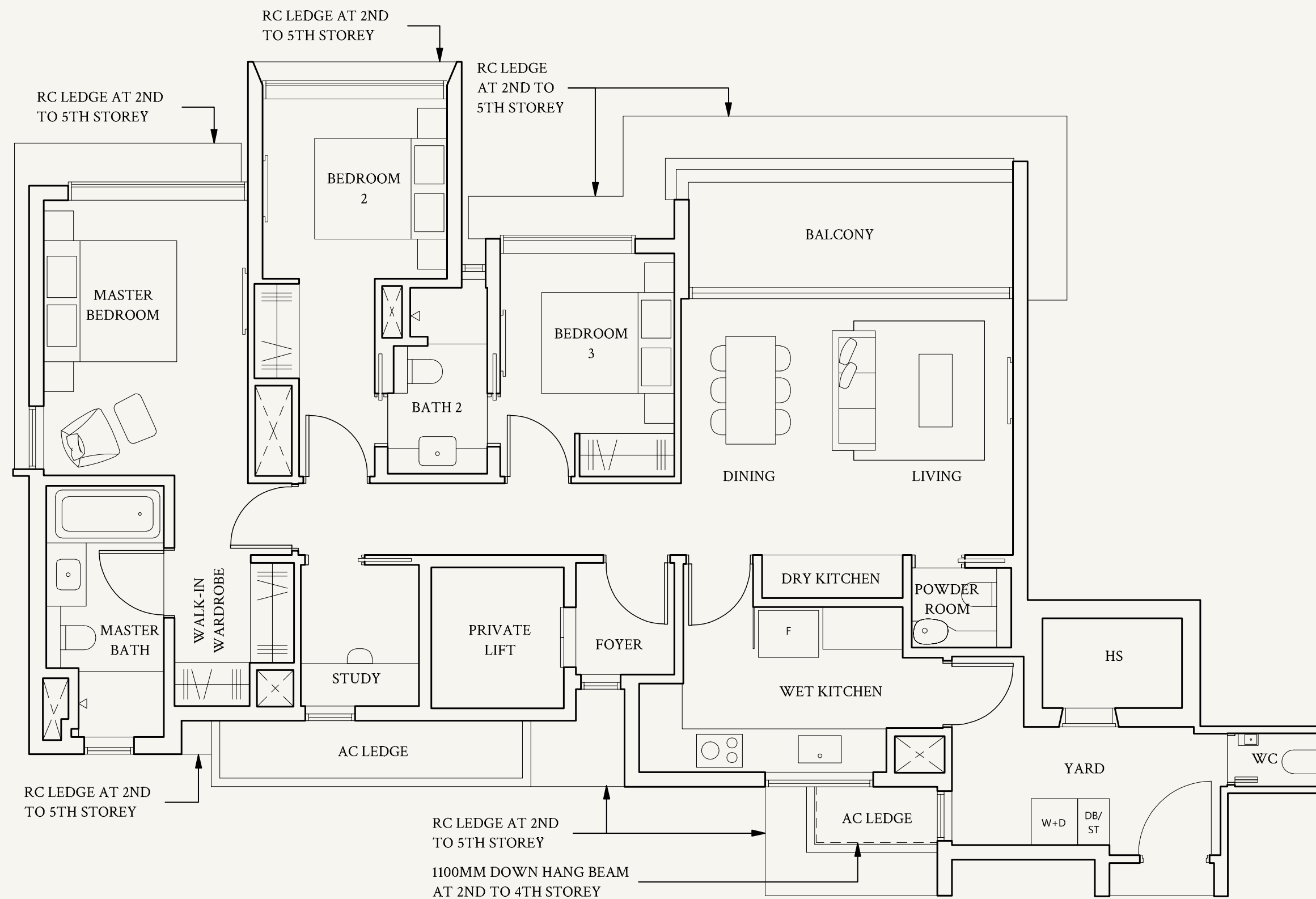
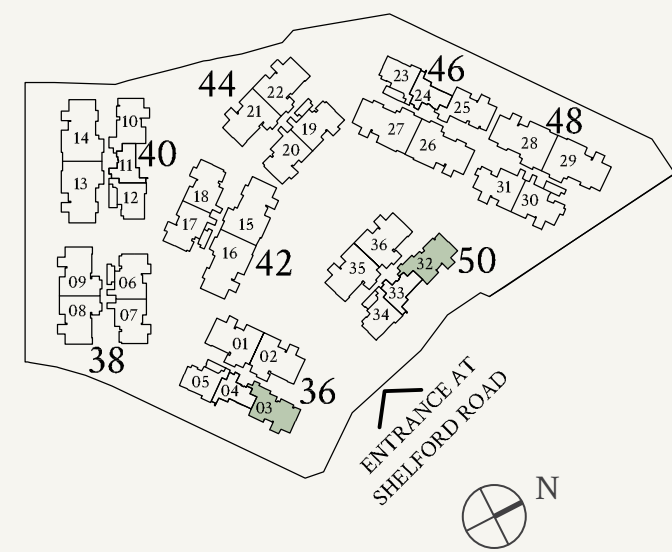
TYPE CS6(p1)

143 sqm | 1539 sqft

#01-03, #01-32



Not to scale



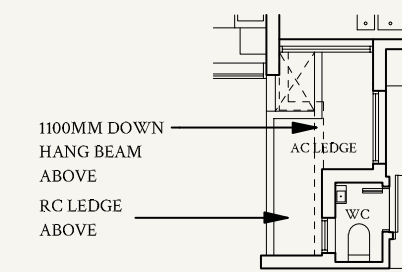
Areas include AC ledge, balcony, private enclosed space (PES) or private roof terrace (PRT), where applicable. All RC ledges are excluded from strata area and non-load bearing. The plans are subjected to change as may be required by relevant authorities. All areas and measurements stated herein as approximate and subject to final survey.

4-Bedroom

TYPE D1
172 sqm | 1851 sqft

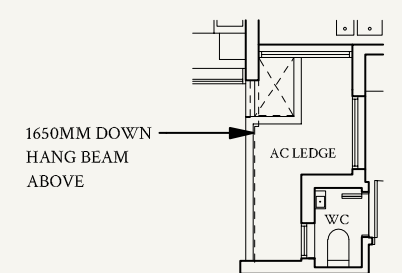
#02-01 to #04-01
#02-35 to #05-35
#02-02* to #05-02*
#02-36* to #04-36*

#04-01, #04-36*

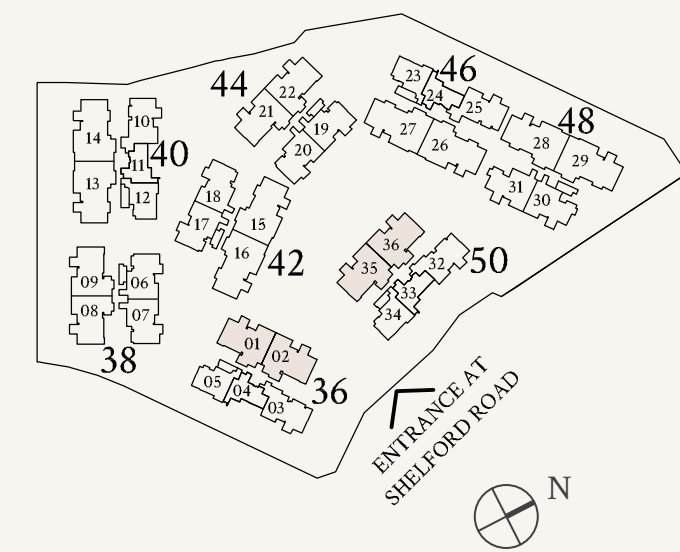


Not to scale

#05-35, #05-02*

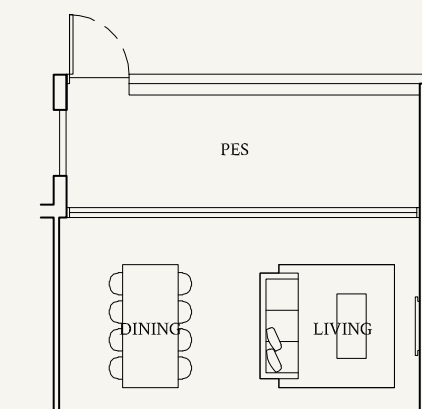


Not to scale

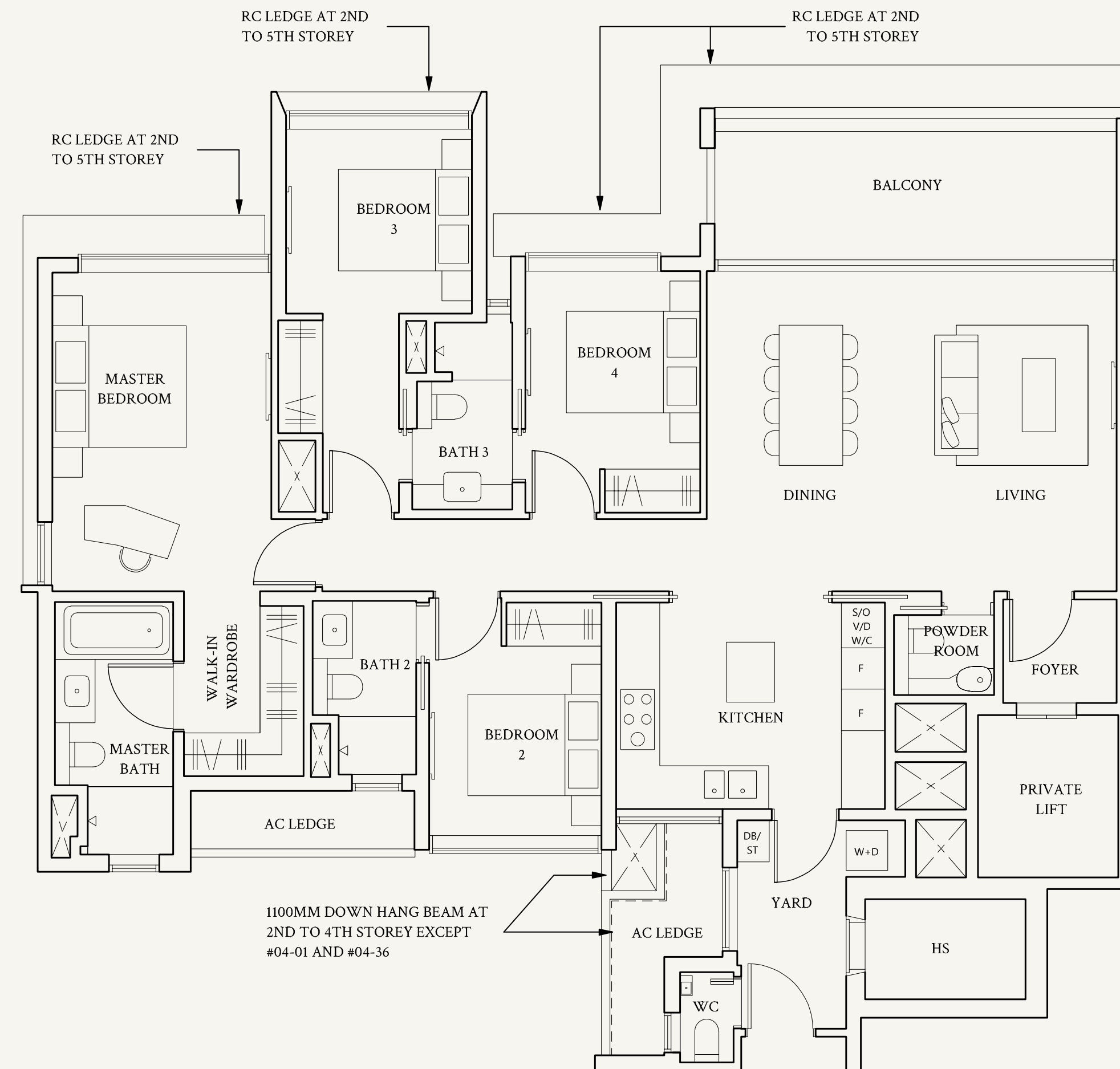


TYPE D1(p2)
172 sqm | 1851 sqft

#01-01, #01-35
#01-02*, #01-36*



Not to scale



Areas include AC ledge, balcony, private enclosed space (PES) or private roof terrace (PRT), where applicable. All RC ledges are excluded from strata area and non-load bearing. The plans are subjected to change as may be required by relevant authorities. All areas and measurements stated herein as approximate and subject to final survey.

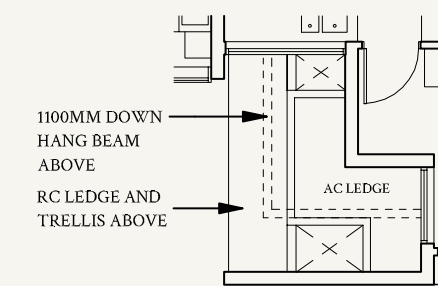
*Mirrored unit

4-Bedroom

TYPE D2
172 sqm | 1851 sqft

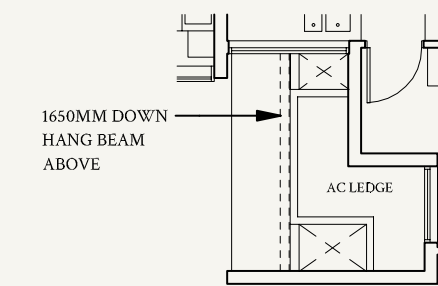
#02-08 to #05-08
#02-21 to #04-21
#02-09* to #04-09*
#02-22* to #05-22*

#04-21, #04-09*

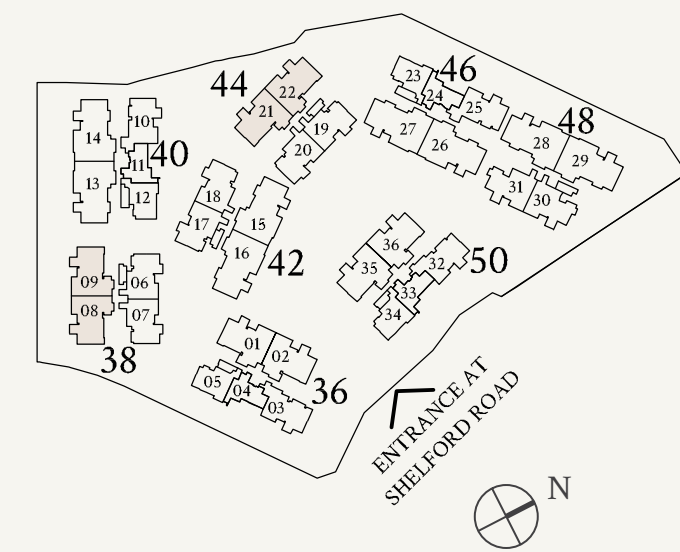


Not to scale

#05-08, #05-22*

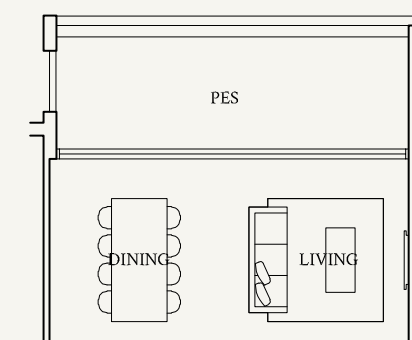


Not to scale

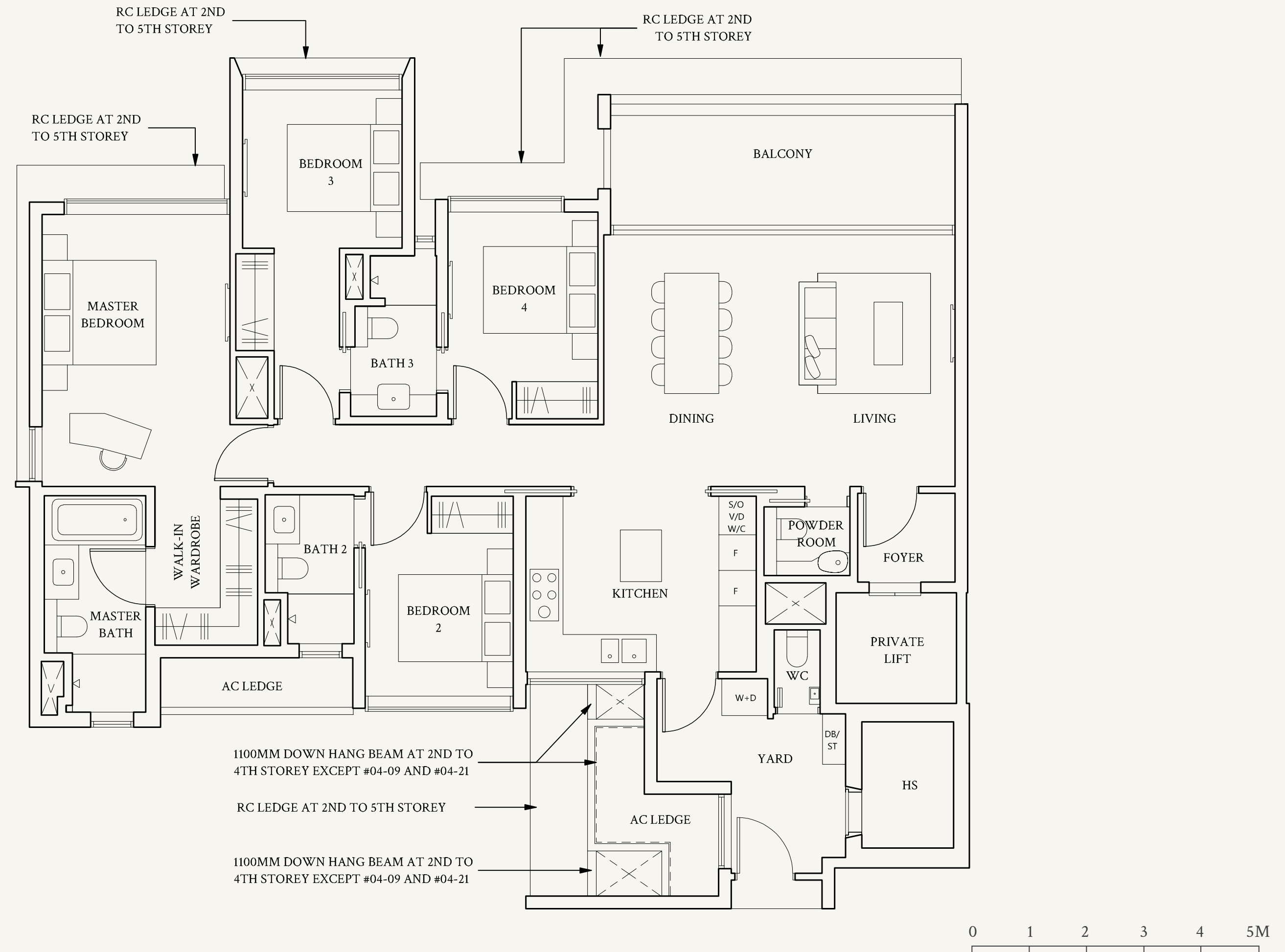


TYPE D2(p1)
172 sqm | 1851 sqft

#01-08, #01-21
#01-09*, #01-22*



Not to scale



Areas include AC ledge, balcony, private enclosed space (PES) or private roof terrace (PRT), where applicable. All RC ledges are excluded from strata area and non-load bearing. The plans are subjected to change as may be required by relevant authorities. All areas and measurements stated herein as approximate and subject to final survey.

*Mirrored unit



For illustration only.

An Innermost Sanctum

Retreat into the sanctity of the spacious master bedroom after a day well spent. Here, there is space and time for peaceful interludes and personal reflection. Here, you will find solace to recharge and awaken to a new dawn of beginnings.

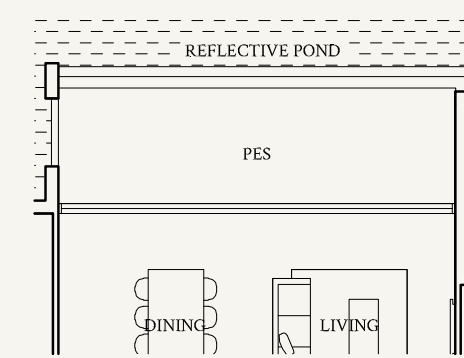
5-Bedroom

TYPE E1
220 sqm | 2368 sqft

- #02-13 to #04-13
- #02-15 to #05-15
- #02-26 to #05-26
- #02-28 to #04-28
- #02-14* to #05-14*
- #02-16* to #04-16*
- #02-27* to #04-27*
- #02-29* to #05-29*

TYPE E1(p1)
220 sqm | 2368 sqft

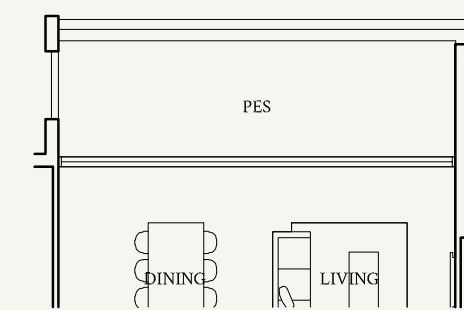
- #01-26, #01-27*



Not to scale

- #01-13, #01-28

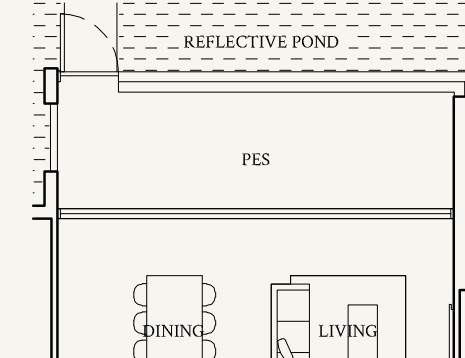
- #01-14*, #01-29*



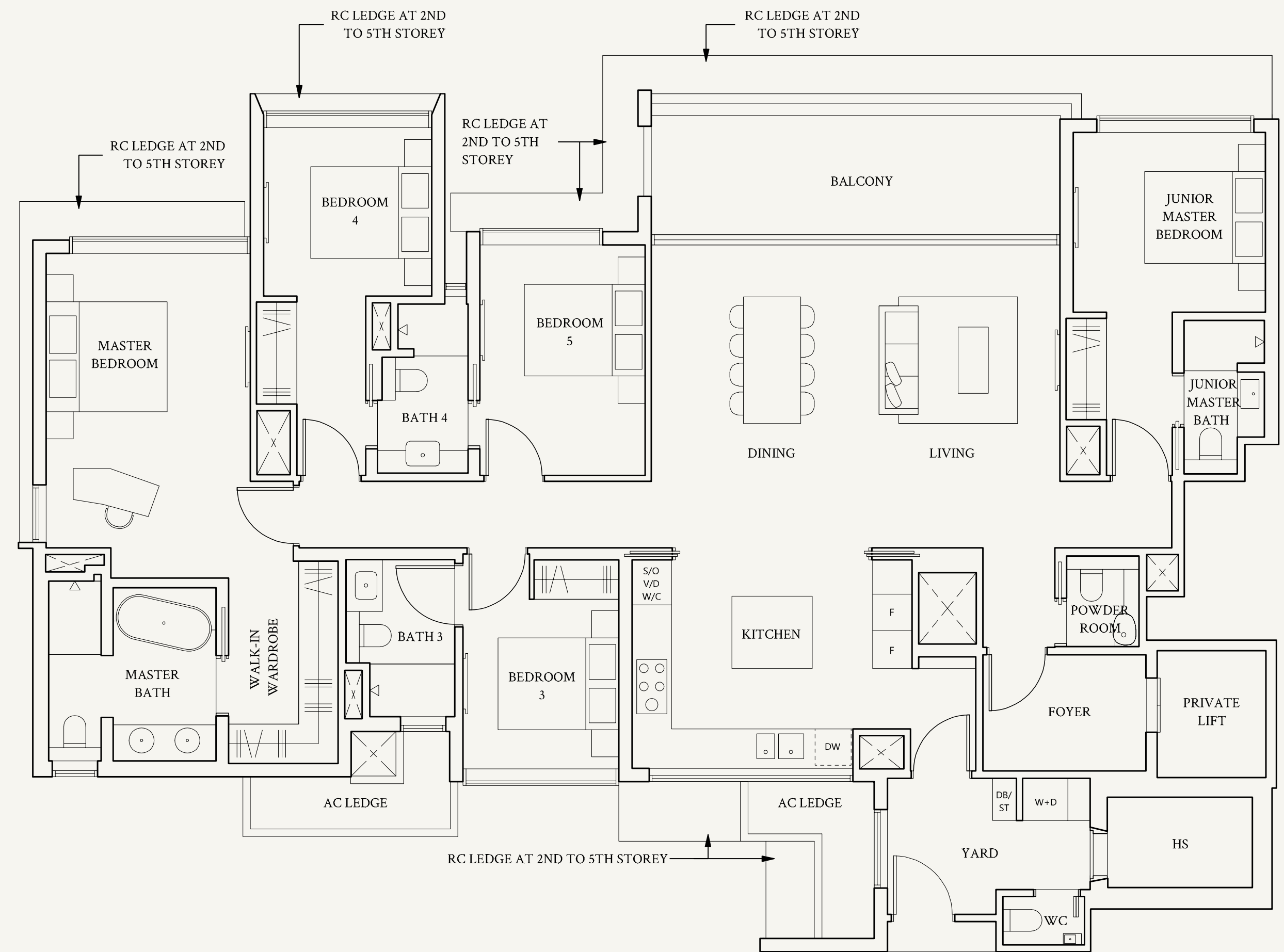
Not to scale

TYPE E1(p2)
220 sqm | 2368 sqft

- #01-15, #01-16*

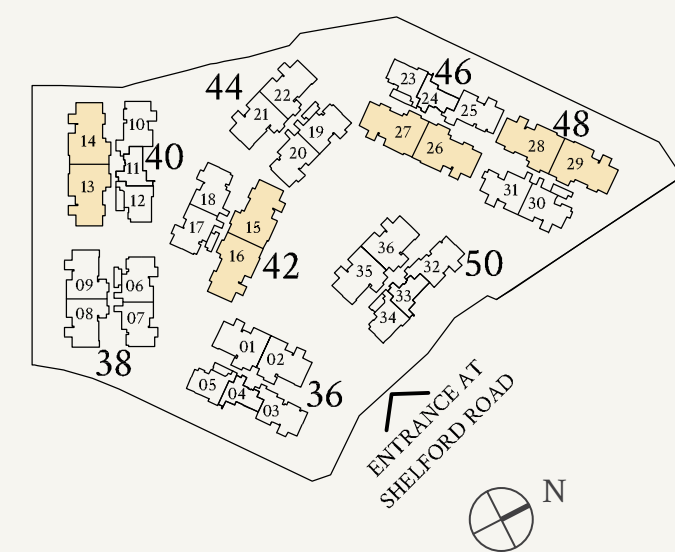


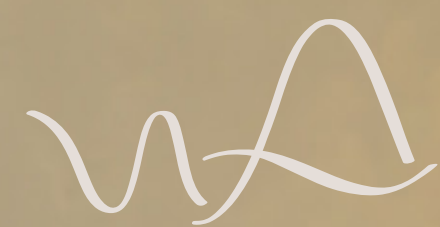
Not to scale



Areas include AC ledge, balcony, private enclosed space (PES) or private roof terrace (PRT), where applicable. All RC ledges are excluded from strata area and non-load bearing. The plans are subjected to change as may be required by relevant authorities. All areas and measurements stated herein as approximate and subject to final survey.

*Mirrored unit





WATTEN HOUSE

PENTHOUSES



Villas in the Sky

Watten House includes 8 rare penthouses, under the Sky Villa Prestige Collection and Sky Villa Luxury Collection. Each spanning between 3,412 and 4,080 sqft, these double-storey 6- and 7-bedroom penthouses are designed like villas in the sky, for those accustomed to the very best.



“In the mansion I would have the eaves deep and the walls dark,
I would push back into the shadows the things that come forward
too clearly, I would strip away the useless decoration.”

JUN'ICHIRO TANIZAKI, IN PRAISE OF SHADOWS



WATTEN HOUSE

SKY VILLA LUXURY
COLLECTION

Tranquil Living Elevated

At the highest point of Watten Estate, the double-storey penthouses stand as architectural masterpieces in nature. Whether you are spending time indoors or outdoors, you will find generously designed spaces that bring the whole family together.



Penthouse

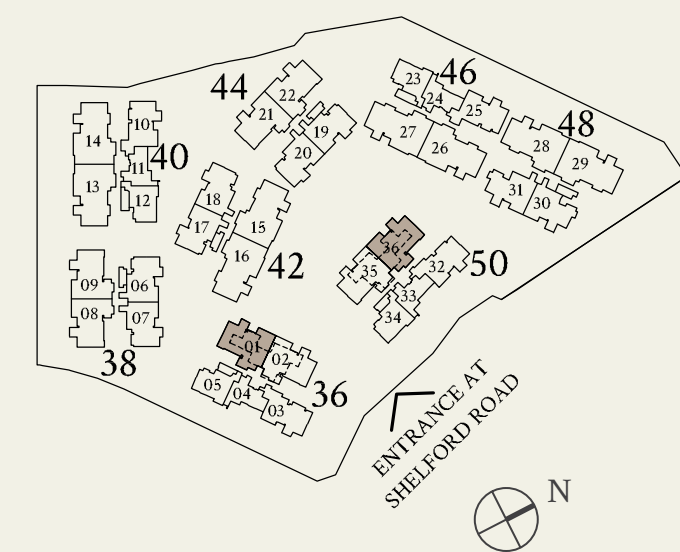
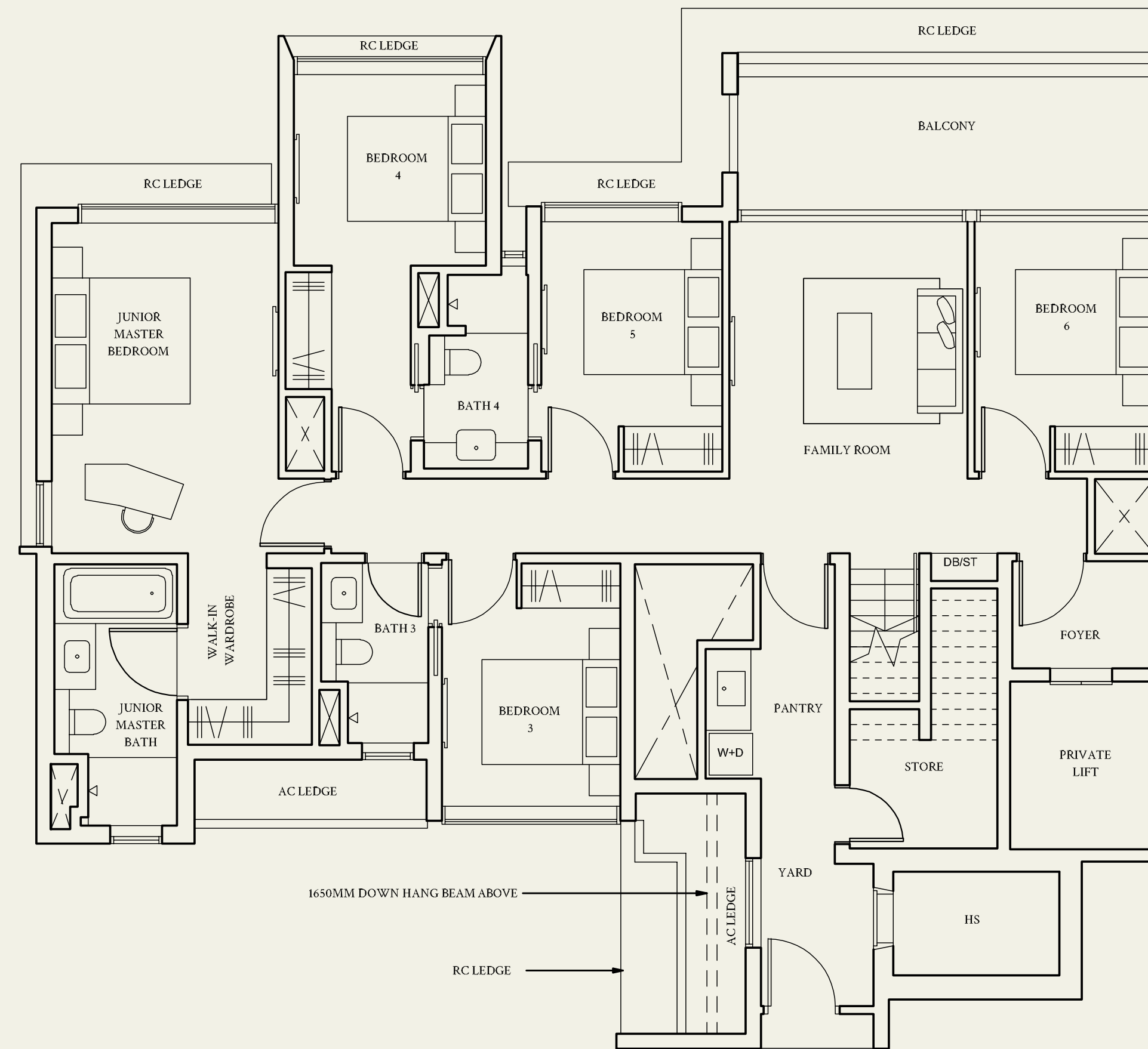
TYPE PH1
Lower Level

317 sqm | 3412 sqft

Inclusive of strata void area of
9 sqm / 97 sqft above staircase

#05-01

#05-36*



Areas include AC ledge, balcony, private enclosed space (PES) or private roof terrace (PRT), where applicable. All RC ledges are excluded from strata area and non-load bearing. The plans are subjected to change as may be required by relevant authorities. All areas and measurements stated herein as approximate and subject to final survey.

*Mirrored unit

Penthouse

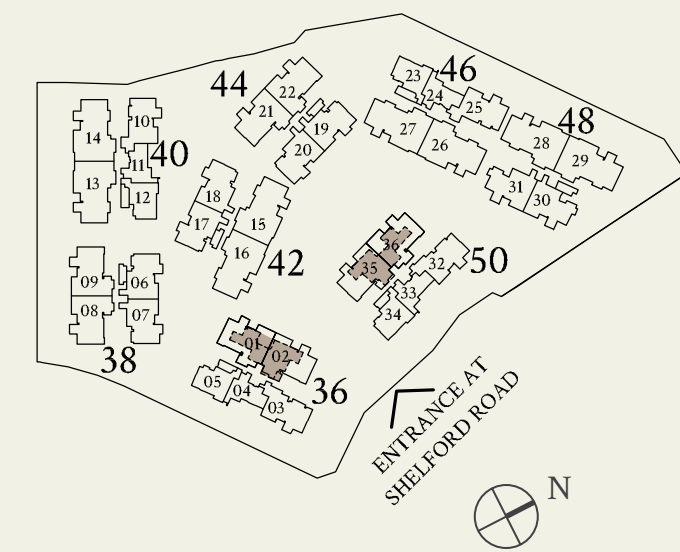
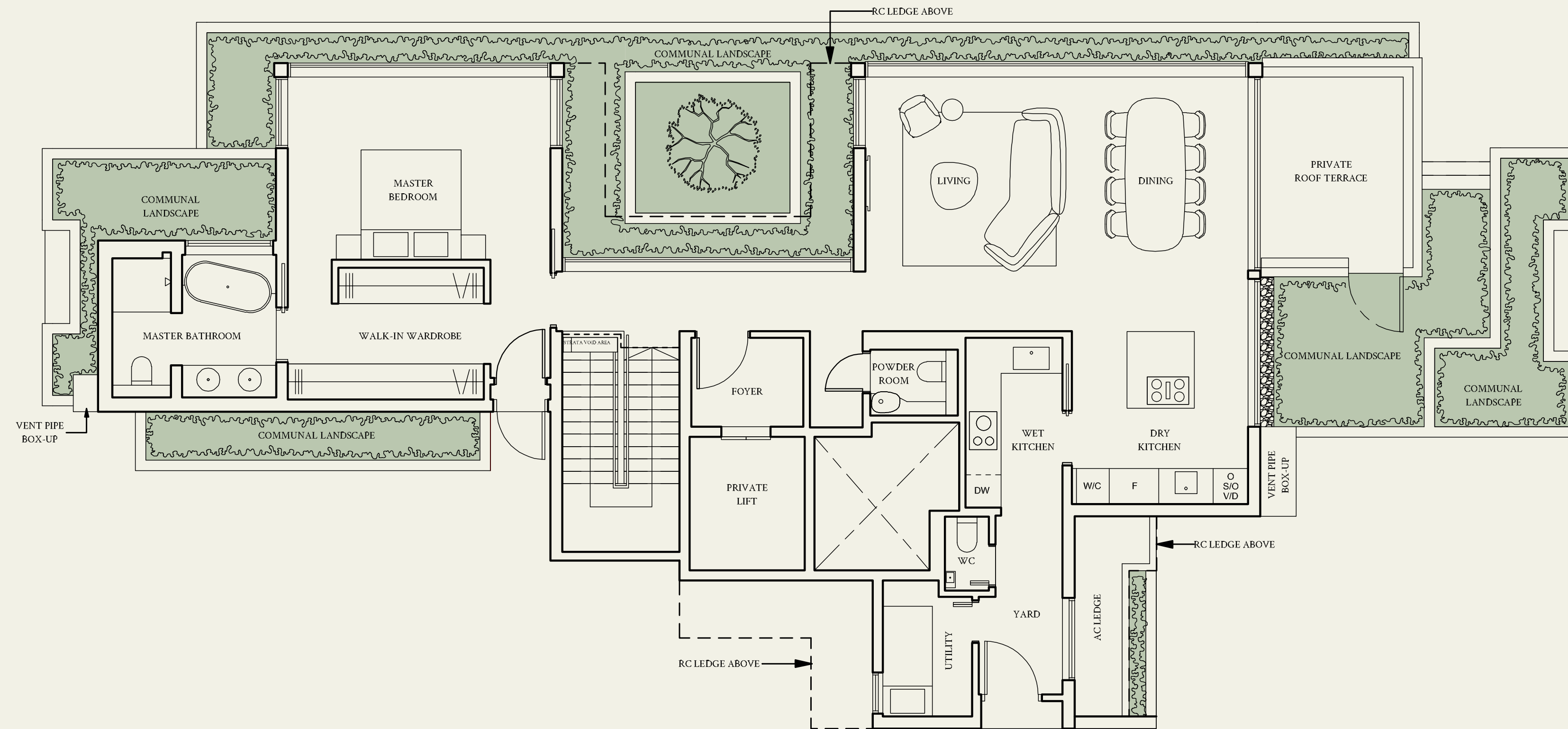
TYPE PH1
Upper Level

317 sqm | 3412 sqft

Inclusive of strata void area of
9 sqm / 97 sqft above staircase

#05-01

#05-36*



Areas include AC ledge, balcony, private enclosed space (PES) or private roof terrace (PRT), where applicable. All RC ledges are excluded from strata area and non-load bearing. The plans are subjected to change as may be required by relevant authorities. All areas and measurements stated herein as approximate and subject to final survey.

*Mirrored unit

Penthouse

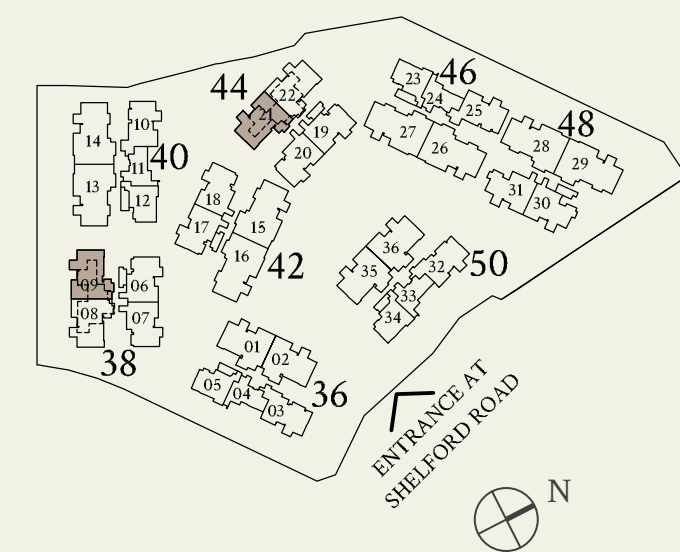
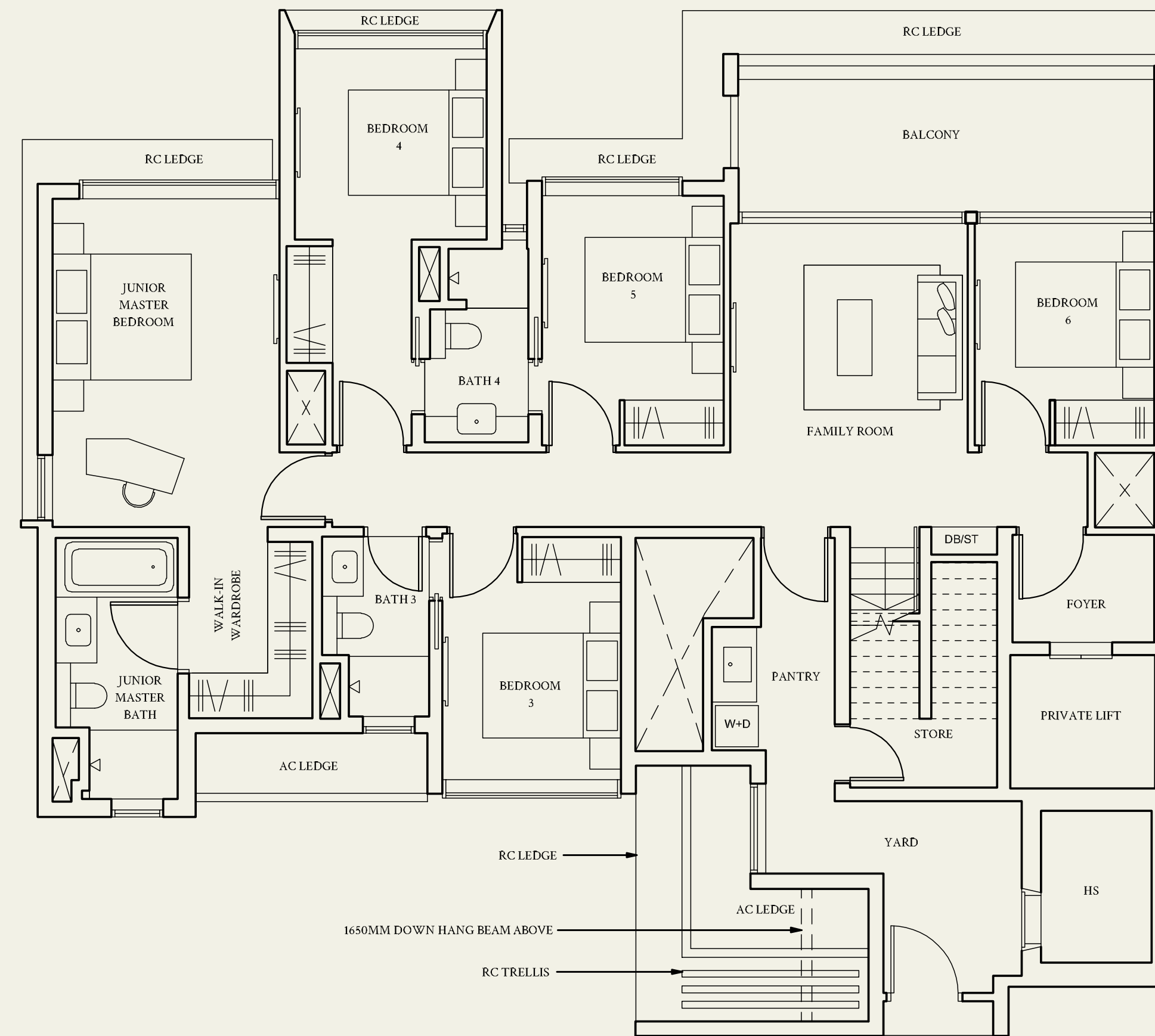
TYPE PH2
Lower Level

317 sqm | 3412 sqft

Inclusive of strata void area of
9 sqm / 97 sqft above staircase

#05-21

#05-09*



Areas include AC ledge, balcony, private enclosed space (PES) or private roof terrace (PRT), where applicable. All RC ledges are excluded from strata area and non-load bearing. The plans are subjected to change as may be required by relevant authorities. All areas and measurements stated herein as approximate and subject to final survey.

*Mirrored unit

Penthouse

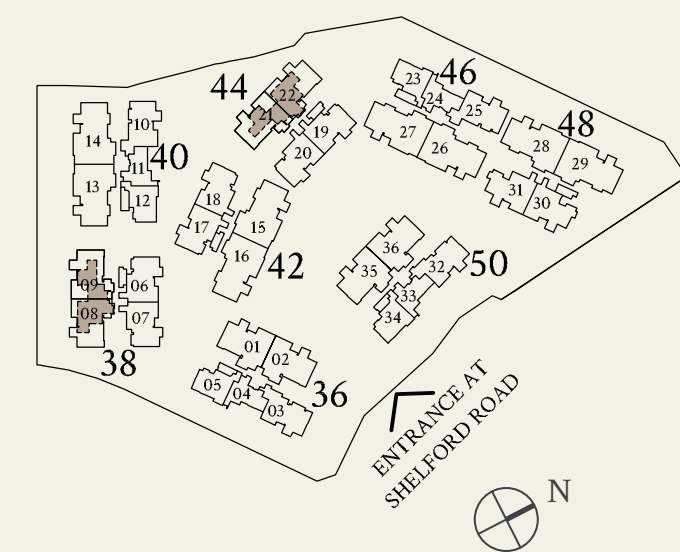
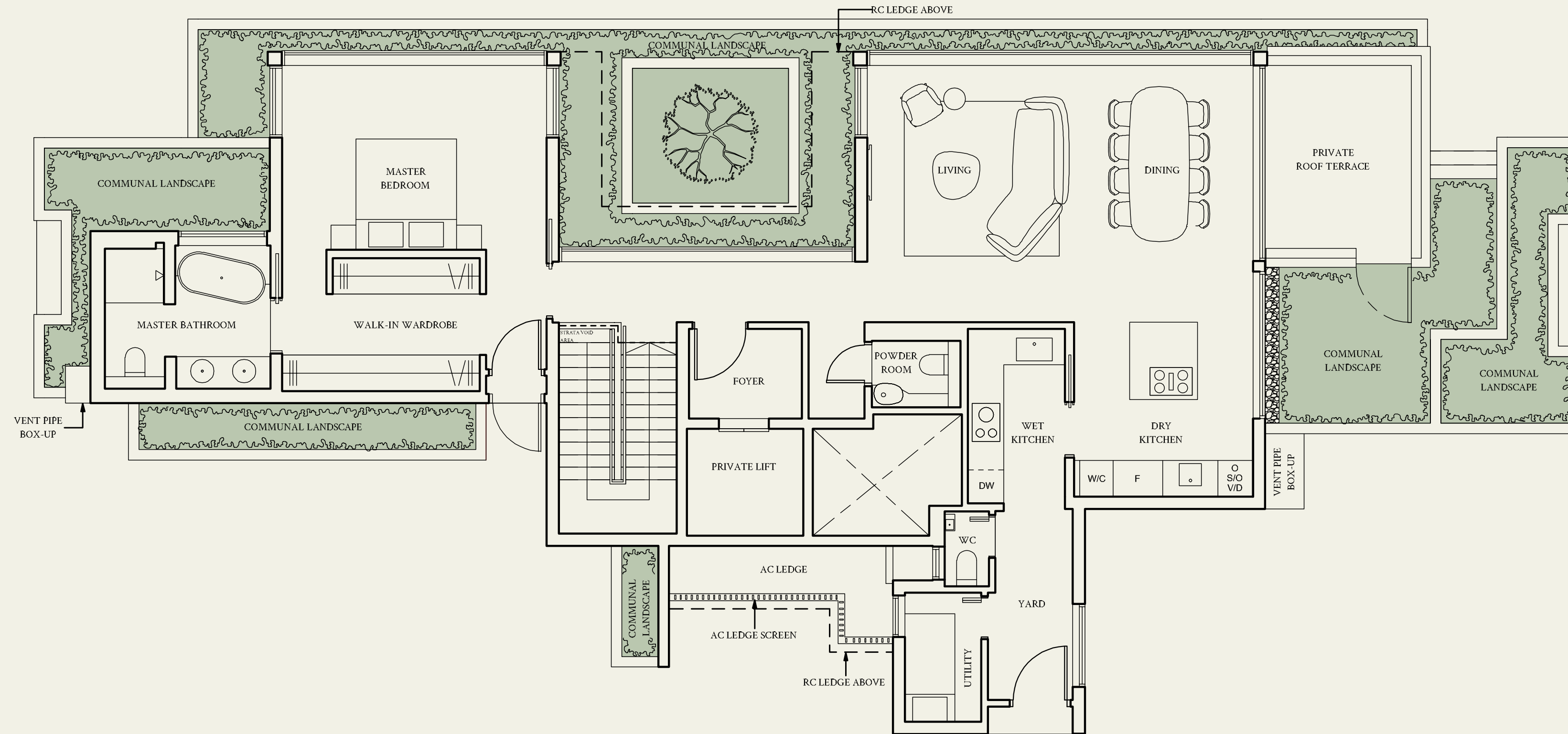
TYPE PH2
Upper Level

317 sqm | 3412 sqft

Inclusive of strata void area of
9 sqm / 97 sqft above staircase

#05-21

#05-09*



Areas include AC ledge, balcony, private enclosed space (PES) or private roof terrace (PRT), where applicable. All RC ledges are excluded from strata area and non-load bearing. The plans are subjected to change as may be required by relevant authorities. All areas and measurements stated herein as approximate and subject to final survey.

*Mirrored unit



WATTEN HOUSE

SKY VILLA PRESTIGE
COLLECTION



Penthouse

TYPE PH3

Lower Level

379 sqm | 4080 sqft

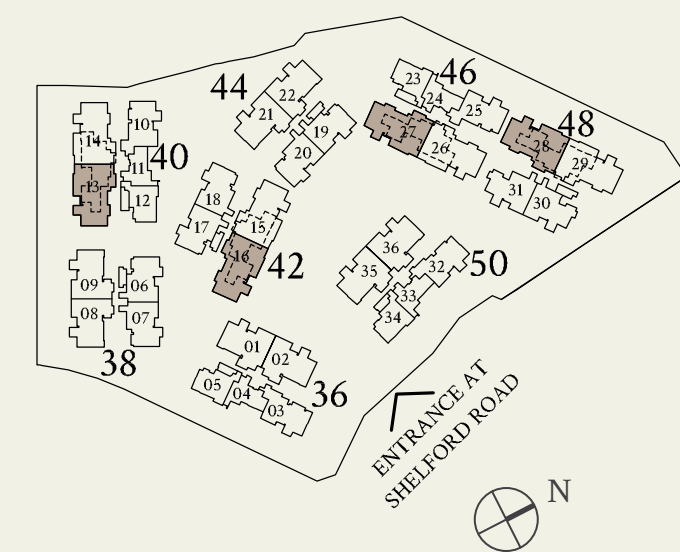
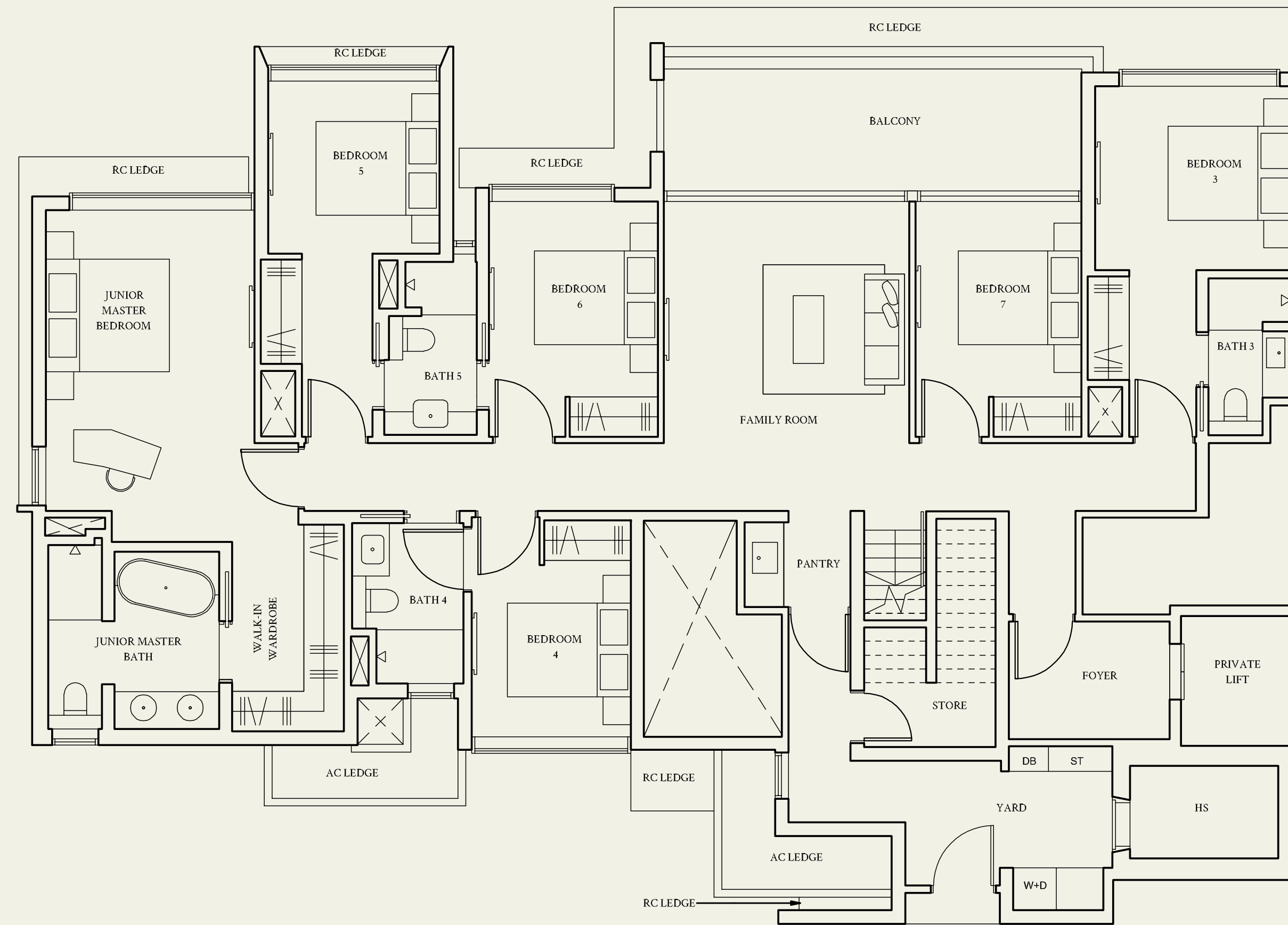
Inclusive of strata void area of
9 sqm / 97 sqft above staircase

#05-13

#05-28

#05-16*

#05-27*



Areas include AC ledge, balcony, private enclosed space (PES) or private roof terrace (PRT), where applicable. All RC ledges are excluded from strata area and non-load bearing. The plans are subjected to change as may be required by relevant authorities. All areas and measurements stated herein as approximate and subject to final survey.

*Mirrored unit

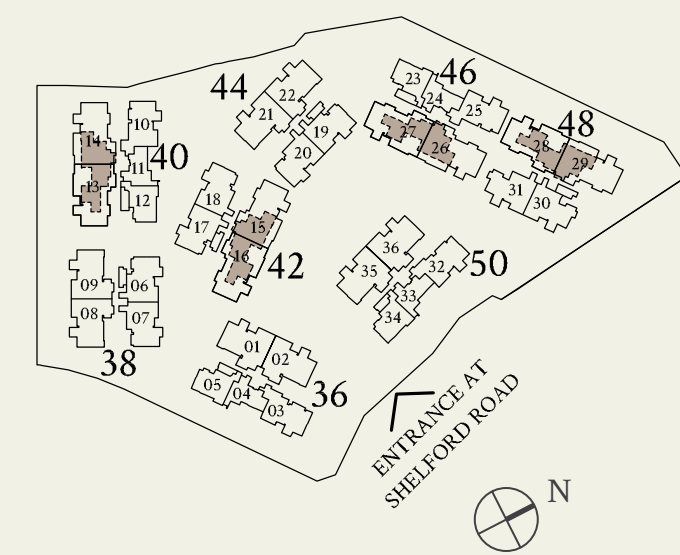
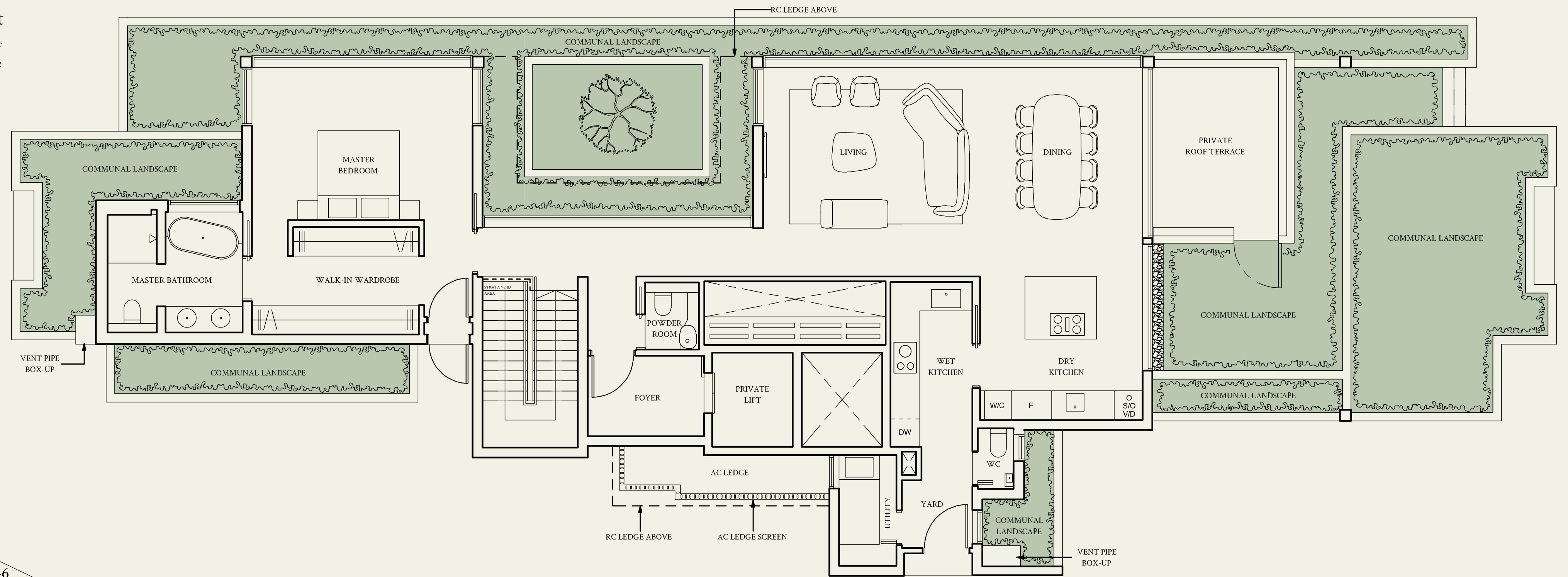
Penthouse

TYPE PH3
Upper Level

379 sqm | 4080 sqft

Inclusive of strata void area of
9 sqm / 97 sqft above staircase

- #05-13
- #05-28
- #05-16*
- #05-27*



Areas include AC ledge, balcony, private enclosed space (PES) or private roof terrace (PRT), where applicable. All RC ledges are excluded from strata area and non-load bearing. The plans are subjected to change as may be required by relevant authorities. All areas and measurements stated herein as approximate and subject to final survey.

*Mirrored unit



Artist's Impression